

2015-16 SCHEDULE

Date	Opponent	Time (PT)
Nov. 15	at #22 North Carolina	W, 79-77
Nov. 19	HAMPTON	W, 86-51
Nov. 22	UC SANTA BARBARA	W, 79-51
Nov. 24	CLEMSON	W, 69-56
Nov. 28	NORTH DAKOTA	W, 77-51
Nov. 30	SAN JOSE ST. (P12N)	W, 104-74
Dec. 5	UTAH VALLEY	W, 79-68
Dec. 12	PORTLAND	W, 93-52
Dec. 15	UC RIVERSIDE	W, 95-81
Dec. 17	PORTLAND STATE	W, 122-59
Dec. 28	SEATTLE U	W, 82-62
Jan. 2	at #21 UCLA * (P12N)	L, 69-80
Jan. 4	at USC * (P12N)	L, 67-74
Jan. 8	at #11 Oregon St. * (P12N)	L, 33-60
Jan. 10	#11 OREGON ST. * (P12N)	L, 59-45
Jan. 15	#11 STANFORD * (P12N)	6 PM
Jan. 17	CALIFORNIA *	2 PM
Jan. 22	at Colorado * (P12N)	5 PM
Jan. 24	at Utah *	1 PM
Jan. 29	ARIZONA STATE * (P12N)	8 PM
Jan. 31	ARIZONA * (P12N)	12 PM
Feb. 5	at Washington State * (P12N)	8 PM
Feb. 7	at Washington *	12 PM
Feb. 12	UTAH *	6 PM
Feb. 14	COLORADO * (P12N)	4 PM
Feb. 19	UCLA * (P12N)	6 PM
Feb. 21	USC *	2 PM
Feb. 26	at California *	6 PM
Feb. 28	at Stanford * (P12N)	11 AM

Pac-12 Tournament

Mar. 3	First Round # (P12N)	TBA
Mar. 4	Second Round # (P12N)	TBA
Mar. 5	Semifinals # (P12N)	TBA
Mar. 6	Championship (ESPN)	6 PM

Home games in **BOLD CAPS** at Matthew Knight Arena

* Pac-12 Conference game

KeyArena (Seattle, Wash.)

P12N: Pac-12 Networks

Top four seeds get a bye in the first round of the Pac-12 Tournament

SOCIAL MEDIA

For live updates, graphics, videos and highlights all season long, follow Oregon women's basketball on social media. You can find the Ducks on twitter (@OregonWBB), instagram (@OregonWBB) and facebook (facebook.com/OregonWBB). Please use the hashtag #GoDucks.



OREGON DUCKS (11-4, 0-4) vs. #11 STANFORD CARDINAL (13-3, 3-1)

Jan. 15, 2016 | 6 PM | Eugene, Ore. | Matthew Knight Arena (6,657 for WBB)
TV: Pac-12 Networks | Radio: KUGN 590, KUIK 1320 & TuneIn



OREGON BREAKDOWN (11-4, 0-4 Pac-12)

FG%: 48.2 | 3FG%: 39.6 | FT%: 64.4 | PPG: 78.6

Notable: Oregon went 11-0 in non-conference play, including a road win at North Carolina to start the season, but have struggled to an 0-4 start in Pac-12 play. The Ducks have owned halftime leads in three of those four losses. Four of Oregon's first six Pac-12 games (at USC, vs. Cal) were or are against top-25 ranked teams. Jillian Alleyne leads the nation with 13 double-doubles this season and the senior is averaging a team-high 18.1 points and 13.4 rebounds per game. Forward Liz Brenner led the Ducks with a season-high 13 points in Sunday's home loss to No. 11 Oregon State.

#11 STANFORD BREAKDOWN (13-3, 3-1 Pac-12)

FG%: 42.6 | 3FG%: 35.6 | FT%: 68.1 | PPG: 70.5

Stanford Series Record: UO trails, 9-48 (8-21 in Eugene)

Last Meeting: UO shocked No. 19 Stanford in Eugene last year, winning 62-55, snapping an 18-game losing streak. UO held the Cardinal to just 35.8 percent shooting and Stanford went 1-for-13 from three in the second half. Jillian Alleyne had 22 points and 12 rebounds. Erica McCall didn't score.

Notable: The Cardinal are led by Lili Thompson's 15.3 points per game and McCall's 9.5 rebounds per game. Karlie Samuelson is shooting 42.1 percent from three. Brittany McPhee is averaging a team-high 11 points in Pac-12 play.

OREGON DUCKS ROSTER

No.	Name	Pos.	Ht.	Yr.	Hometown / Last School
4	Maite Cazorla	G	5-10	Fr.	Las Palmas, Spain / Segle XXI
5	Jordan Loera	G	5-9	Sr.	Moses Lake, Wash. / Moses Lake HS
10	Lexi Bando	G	5-9	So.	Eugene, Ore. / Willamette HS
11	Liz Brenner	F	6-1	RSr.	Portland, Ore. / Jesuit HS
12	Megan Trinder	G	5-7	Jr.	Hollywell, Australia / Northeast CC
13	Mar'Shay Moore	G	5-8	Jr.	Vancouver, Wash. / Blue Mountain CC
14	Jillian Alleyne	F	6-3	Sr.	Fontana, Calif. / Summit HS
15	Jacinta Vandenberg	F	6-5	RJr.	Melbourne, Australia / Fresno State
22	Lauren Yearwood	F	6-3	Fr.	Victoria, British Columbia / Oak Bay HS
32	Oti Gildon	F	6-1	Fr.	Spokane, Wash. / Gonzaga Prep
33	Lexi Petersen	G	5-11	Sr.	Tukwila, Wash. / Seattle Christian HS
44	Kat Cooper	G	6-0	Sr.	Tacoma, Wash. / Boston College
51	Katie Gruys	F	6-0	Sr.	Maple Lake, Minn. / Annandale HS
--	Justine Hall	G	5-11	So.	Denver, Colo. / Purdue

Head Coach: Kelly Graves (Second Season)

Assistant Coaches: Jodie Berry, Mark Campbell, Nicole Powell

Pronunciation Guide: Jillian Alleyne (a - LEAN), Maite Cazorla (My - TAY), Oti Gildon (Ahtee), Katie Gruys (GRICE),

Jordan Loera (low - ET - uh), Megan Trinder (MEE - gun), Jacinta Vandenberg (Juh - SIN - tuh)

ROSTER NOTES

PROBABLE STARTERS

No.	Players	Pos.	PPG	RPG	APG	Notable
4	Maite Cazorla	G	9.1	2.4	6.5	18th in NCAA in assist-to-turnover ratio (2.51), 11th in APG
10	Lexi Bando	G	10.1	2.2	1.4	Ranks fifth in the Pac-12, shooting 42.4 percent from three
33	Lexi Petersen	G	13.6	2.9	2.6	Seventh in the Pac-12, shooting 49.7 percent from the floor
14	Jillian Alleyne	F	18.1	13.4	2.0	Leads the NCAA with 13 double-doubles, third in rebs per game
15	Jacinta Vandenberg	F	7.0	5.5	2.1	Sixth in the Pac-12 in blocked shots, averaging 1.6 per game

RESERVES

No.	Players	Pos.	PPG	RPG	APG	Notable
44	Kat Cooper	G	5.5	1.5	0.7	Fifth-year Boston College transfer, played AAU with Lexi Petersen
11	Liz Brenner	F	5.5	2.7	0.7	Multi-sport star; volleyball All-American back for fifth year at UO
32	Oti Gildon	F	3.3	1.9	0.2	Freshman was the No. 37 ranked recruit in the nation (ESPNW)
13	Mar'Shay Moore	G	3.1	0.8	0.4	Seven points in season-high 18 minutes vs. OSU on Sunday
5	Jordan Loera	G	2.3	0.8	1.1	Season-high nine points (3-of-4 from three) in Utah Valley win
22	Lauren Yearwood	F	2.0	2.4	0.5	Career-high 10 points in PSU win; U19 Canadian team forward
51	Katie Gruys	F	0.0	0.5	0.0	Walk-on was awarded a scholarship this season by Kelly Graves

Junior Megan Trinder is out for the season with a preseason knee injury & sophomore Justine Hall is redshirting after transferring



ALLEYNE IN THE RECORD BOOKS

- Jillian Alleyne is Oregon’s all-time leading rebounder with 1,545 boards. She jumped Bev Smith (1,362 boards) for first on Nov. 19, 2015 in a win over Hampton. The Pac-12 record for career rebounds is 1,567, held by former Stanford star Chiney Ogumike. She needs 22 rebounds to match that record.
- Alleyne also owns Oregon’s and the Pac-12’s single-game records for rebounds (27) plus UO’s and the conference’s single-season records for rebounds (519 as a sophomore). The 519 rebounds are now the sixth most in NCAA history.
- Until posting six rebounds in a loss at Oregon State on Jan. 8, Alleyne had a double-double in 29 straight games, breaking her own Pac-12 and UO record of 21 straight games. It was the third longest career streak in NCAA history, behind Oklahoma’s Courtney Paris (112) and Robert Morris’ Artemis Spanou (33).
- Alleyne has 82 career double-doubles, good for second all-time at Oregon and the Pac-12. Bev Smith has the UO record, with 88 in her career (before the NCAA or Pac-12 sponsored women’s sports). Chiney Ogumike owns the Pac-12 record with 85 double-doubles.
- Alleyne’s 29 double-doubles as a junior set both the UO and Pac-12 single-season records.
- Alleyne ranks fifth all-time at Oregon with 1,909 points scored. Alison Lang holds the UO record with 2,252.

ALLEYNE AGAINST THE CARDINAL

Jillian Alleyne is averaging 18.25 points and 12 rebounds in four career games against Stanford. She has a double-double in all four games played vs. the Cardinal.

ACTIVE LEADER

Jillian Alleyne is the NCAA’s active leader with 1,545 career rebounds. She also leads all active players, averaging 14.3 rebounds per game over her stellar career. Jillian Alleyne is the only player in the nation with 1,800+ points and 1,200+ rebounds. She is one of just five players in the NCAA with 1,000 career rebounds. Alleyne owns the most double-doubles of any player with 82. She is also the active scoring leader in the Pac-12.

ALLEYNE’S 72-GAME STREAK

Jillian Alleyne led the Ducks in rebounding in 72 straight games, stretching from her sophomore to senior season, before Jacinta Vandenberg grabbed seven boards and she snagged six in a loss at Oregon State on Jan. 8.

ALLEYNE IN THE NCAA RANKINGS

This season Jillian Alleyne leads the NCAA with 13 double-doubles, is third with 13.4 rebounds per game and is 14th in field goal percentage, shooting 57.7 percent. Alleyne is fourth in total rebounds with 201.

PRESEASON HONORS

Jillian Alleyne was named honorable mention preseason All-America by the AP, preseason all-Pac-12 and selected to both the Naismith Trophy watch list and the Wooden Award watch list. ESPNW rated her No. 16 player in its preseason countdown of the top-25 players in the nation.

CAREER TOTAL REBOUNDS

Alleyne ranks eighth in NCAA history in career rebounds.

Name, School	Years	Rebs
1. Courtney Paris, Oklahoma	2006-09	2,034
2. Wanda Ford, Drake	1983-86	1,815
3. Patricia Hoskins, Miss. Valley	1986-89	1,662
4. Sylvia Fowles, LSU	2005-08	1,570
5. Chiney Ogumike, Stanford	2011-14	1,567
6. Artemis Spanou, Robert Morris	2011-14	1,563
7. Ta’Shia Phillips, Xavier	2008-11	1,552
8. <i>Jillian Alleyne, Oregon</i>	<i>2013-pres.</i>	<i>1,545</i>
9. Cheryl Miller, USC	1983-86	1,534
10. Cheryl Taylor, Tennessee Tech	1983-87	1,532

CAREER REBOUNDS PER GAME

If the season ended today, Jillian Alleyne’s 14.3 career rebounds per game would rank fourth in NCAA history.

Name, School	Years	RPG
1. Wanda Ford, Drake	1983-86	15.5
2. Patricia Hoskins, Mississippi Val.	1985-89	15.1
3. Courtney Paris, Oklahoma	2006-09	14.8
4. <i>Jillian Alleyne, Oregon</i>	<i>2013-pres.</i>	<i>14.3</i>
5. Tarcha Hollis, Grambling	1988-91	13.9

CAREER DOUBLE-DOUBLES

Jillian Alleyne is now fifth all-time in NCAA history with 82 career double-doubles. Alleyne has four career 30-20 games and seven career 20-20 games.

Name, School	Years	D-Ds
1. Courtney Paris, Oklahoma	2006-09	128
2. Cheryl Taylor, Tenn. Tech	1984-87	90
3. Chiney Ogumike, Stanford	2011-14	85
Artemis Spanous, Robert Morris	2011-14	85
5. <i>Jillian Alleyne, Oregon</i>	<i>2013-pres.</i>	<i>82</i>

2,000 POINTS & 1,500 REBOUNDS

Jillian Alleyne has a chance to join an exclusive club this season, becoming the 10th player in NCAA history to reach 2,000 career points and 1,500 career rebounds.

Name, School	Points	Rebs
1. Patricia Hoskins, Miss. Valley	3,122	1,662
2. Cheryl Miller, USC	3,018	1,534
3. Chiney Ogumike, Stanford	2,737	1,567
4. Courtney Paris, Oklahoma	2,729	2,034
5. Wanda Ford, Drake	2,636	1,887
6. Cheryl Taylor, Tenn. Tech	2,526	1,532
7. Sylvia Fowles, LSU	2,234	1,570
8. Marilyn Stephens, Temple	2,194	1,519
9. Artemis Spanou, Robert Morris	2,124	1,563
- <i>Jillian Alleyne, Oregon</i>	<i>1,909</i>	<i>1,545</i>

POSTSEASON AWARDS

- AS A FRESHMAN: Pac-12 freshman of the year (media vote), Pac-12 all-freshman team, honorable mention all-Pac-12
- AS A SOPHOMORE: Honorable mention All-American, all-Pac-12, Pac-12 all-defensive team
- AS A JUNIOR: AP third-team All-American, All-Pac-12, Pac-12 all-defensive team, Wade and Wooden watch lists

GAME NOTES

TV AND RADIO BROADCAST INFO

Oregon's game on Friday versus Stanford will be broadcast live on Pac-12 Networks and streamed for those with a cable TV login at Pac-12.com/live. The game will also be available on the radio via KUGN590 in Eugene, KUIK 1320 in Portland or TuneIn worldwide with Terry Jonz on the call. Search "Oregon IMG" in the app or TuneIn.com to find the broadcast.

LAST TIME OUT

The Oregon women's basketball team held a one-point advantage at halftime, but the Ducks were unable to hold off No. 11 Oregon State in the second half, falling 59-45 Sunday afternoon at Matthew Knight Arena. Using tough perimeter defense, the Ducks (11-4, 0-4 Pac-12) forced 11 first-half turnovers and converted them into 14 points. After trailing as much as nine in the opening quarter, a bucket at the 5:51 mark from Liz Brenner started a 21-11 run that would give Oregon the 25-24 lead going into halftime. Maite Cazorla was a spark plug for the Ducks' offense, scoring eight of her 12 points in the second quarter. Oregon State came out of halftime and scored the first seven points, regaining the lead. The Beavs would stay out in front the remainder of the way, outscoring UO 35-20 in the second half. "I don't really think they did anything different," Oregon head coach Kelly Graves said. "They know what they want to run, they know how they want to defend and they do it really well." The Ducks had trouble finding an offensive rhythm in the second half and only forced seven OSU turnovers. While UO shot 44 percent in the first half, the Ducks were just 7-of-26 the rest of the way. Oregon also knocked down just one three, which came from Mar'Shay Moore late in the fourth quarter.

WHEN PLAYING STANFORD

- The Ducks snapped an 18-game losing streak to the Cardinal with last season's 62-55 win in Eugene on Senior Night. *(Box score on last page of notes)*
- Before last year's win over the No. 19 ranked Cardinal, Stanford was ranked in the top-4 in 10 straight meetings with Oregon.
- Oregon trails in the all-time series with Stanford, 48-9.
- Oregon's longest winning streak in the series is three games, the first three meetings between the two teams.
- Stanford's longest winning streak in the series is 22 games, running from 1988 to 1998.
- The most points Oregon has scored in a game against the Cardinal is 97, coming in the first ever game in the series, a 97-62 win in Eugene on Feb. 13, 1981.
- Oregon has lost 26 straight games on the road vs. Stanford. The Ducks' last win at Stanford was actually the first time the two teams met in Stanford, Calif., a 63-54 win on March 5, 1987.

NOTABLE PERFORMANCES VS. STANFORD

2014-15: Jillian Alleyne had 22 points and 12 rebounds as the Ducks upset No. 19 Stanford, 62-55, on Senior Night in Eugene to snap an 18-game losing streak to the Cardinal.

2013-14: In a battle with Stanford senior star Chiney Ogwumike, sophomore Jillian Alleyne tallied 26 points on 11-of-15 shooting with 13 rebounds. Ogwumike posted 33 points and 14 rebounds.

2012-13: Jillian Alleyne posted her 10th double-double of the season (12 points/10 rebounds) at Stanford on Feb. 24, 2013.

2012-13: Ariel Thomas averaged 12 points and seven rebounds in two games against the Cardinal.

2009-10: Nia Jackson scored a career-high 26 points, including 18 in the first half, as the Ducks lost 100-80 to the No. 2 ranked Cardinal at home on Jan. 23, 2010.

The Ducks were down just 80-75 with eight minutes remaining, but Stanford ended the game with a 20-5 run.

2004-05: Andrea Bills scored 18 points and pulled down 15 rebounds while Catherine Kraayeveld added 16 points and 15 boards when the Ducks beat the Cardinal, then ranked No. 5, during the 2004-05 season. Stanford shot just 33.9 percent from the field in the game, including 1-of-9 from three-point range.

2003-04: Corrie Mizusawa hit a layup with 8.2 seconds left to give Oregon a 67-66 win over No. 10 ranked Stanford on Feb. 26, 2004. Eleanor Haring led the Ducks with 18 points and seven rebounds while Mizusawa finished with 13 points and nine assists.

PETERSEN'S STRONG SENIOR YEAR

Lexi Petersen is playing very well in her final season.

- The Tukwila, Wash., native is averaging a career-best 13.6 points per game, besting her previous high of 11.1 points per game set last year as a junior.
- More impressively is her shooting has vastly improved. A career 39.6 percent shooter, Petersen is shooting 49.7 percent from the floor this season, seventh in the Pac-12.

CAZORLA MAKING IMMEDIATE IMPACT

Maite Cazorla started in her first career game, a victory at then-No. 22 North Carolina, and has shined since.

- The native of the Canary Islands has 98 assists compared to just 39 turnovers (2.51-to-1), the second-best mark in the Pac-12 and 18th-best in the NCAA.
- Stanford's Amber Orrange set the Pac-12 single-season record with a 2.91 assist-to-turnover ratio in 2013-14 (began being tracked in 2001-02).
- Cazorla leads the Pac-12 and ranks 11th in the NCAA with 6.5 assists per game. She's 13th in the nation in total assists in 98.

THREE-POINT THREATS

Shooting 39.6 percent from three-point range this year as a team, the Ducks rank sixth in the nation. Helping to achieve that mark are two terrific long-range shooters, all ranking in the top-15 in the Pac-12 in three-point field goal percentage.

- Despite being just a freshman last season, guard Lexi Bando led the Pac-12 in three-point field goal percentage. The Eugene native shot 40 percent (55-of-125) from long range last year, the fifth-best percentage in UO single-season history. She is shooting even better so far this season, 42.4 percent, which is fifth in the conference.
- Senior Lexi Petersen is tied for 11th in the Pac-12, shooting 38.5 percent from beyond the arc.

NON-CONFERENCE TOP-25 WIN

Oregon's victory at No. 22 North Carolina on Nov. 15 to open the season was the Ducks' first victory against a top-25 non-conference team since knocking off No.



2015-16 PAC-12 STANDINGS

As of Jan. 11, 2016

Rk	Team	Pac-12	Overall
1.	Arizona State	4-0	13-3
2.	Stanford	3-1	13-3
	Oregon State	3-1	12-3
	UCLA	3-1	11-4
	Utah	3-1	11-4
6.	Washington	3-2	12-4
7.	USC	2-2	14-2
8.	Washington State	2-3	11-5
9.	California	1-3	10-5
	Arizona	1-3	10-6
11.	Oregon	0-4	11-4
	Colorado	0-4	5-10

OREGON STATS RANKINGS

As of Jan. 11, 2016

POINTS SCORED	78.6 PPG
Pac-12 rank	2nd
NCAA rank (344 total teams)	18th

POINTS ALLOWED	63.7 PPG
Pac-12 rank	7th
NCAA rank	182nd

SCORING MARGIN	+14.9 PPG
Pac-12 rank	4th
NCAA rank	30th

FIELD GOAL PERCENTAGE	48.2%
Pac-12 rank	1st
NCAA rank	7th

3PT FIELD GOAL PERCENTAGE	39.6%
Pac-12 rank	1st
NCAA rank	6th

FREE THROW PERCENTAGE	64.4%
Pac-12 rank	10th
NCAA rank	277th

REBOUNDING MARGIN	+7.7 RPG
Pac-12 rank	3rd
NCAA rank	36th

ASSISTS	17.9 APG
Pac-12 rank	2nd
NCAA rank	12th

ASSIST-TO-TURNOVER RATIO	+1.19
Pac-12 rank	1st
NCAA rank	29th

BLOCKED SHOTS	4.7 BPG
Pac-12 rank	3rd
NCAA rank	58th

STEALS	8.3 SPG
Pac-12 rank	6th
NCAA rank	146th

RECORDS WATCH

OREGON CAREER REBOUNDS

Player	G	Avg.	Rebs
1. Jillian Alleyne (2012-pres.)	108	14.3	1,545
2. Bev Smith (1978-82)	110	12.4	1,362
3. Alison Lang (1980-84)	117	9.8	1,151
4. Stefanie Kasperski (1986-90)	119	8.4	996
5. Amanda Johnson (2009-12)	114	7.8	893
6. Debbie Sporchich (1990-94)	95	9.1	868
7. Arianne Boyer (1993-97)	113	7.5	850
8. Debbie Adams (1977-80)	109	7.8	848
9. Andrea Bills (2001-05)	123	6.7	825
10. C. Kraayeveld (2001-05)	109	7.1	774

PAC-12 CAREER REBOUNDS

Player	School	Years	Rebs
1. Chiney Ogwumike	STAN	11-14	1,567
2. Jillian Alleyne	ORE	12-pres.	1,545
3. Kayla Pedersen	STAN	08-11	1,266
4. Jayne Appel	STAN	07-10	1,263
5. Nnemkadi Ogwumike	STAN	09-12	1,226
6. Gennifer Brandon	CAL	10, 12-14	1,219
7. Lisa Leslie	USC	91-94	1,214
8. Ify Ibekwe	ARIZ	08-11	1,194
9. Tina Thompson	USC	94-97	1,168
10. Nicole Powell	STAN	01-04	1,143

OREGON CAREER POINTS

Player	G	Avg.	Pts
1. Alison Lang (1980-84)	117	19.2	2,252
2. Bev Smith (1978-82)	110	18.8	2,063
3. Stefanie Kasperski (1986-90)	119	16.4	1,956
4. Jillian Alleyne (2012-pres.)	108	17.7	1,909
5. Lauri Landerholm (1982-87)	120	14.9	1,783
6. Amanda Johnson (2009-12)	114	13.2	1,505
7. Arianne Boyer (1993-97)	113	13.3	1,501
8. Shaquala Williams (1998-02)	101	14.6	1,478
9. Taylor Lilley (2007-10)	111	12.7	1,415
10. Debbie Adams (1977-81)	109	12.9	1,412

OREGON CAREER DOUBLE-DOUBLES

Player	G	Sea-High	DD
1. Bev Smith (1978-82)	110	24 ('82)	88
2. Jillian Alleyne (2012-pres.)	108	29 ('14)	82
3. Alison Lang (1980-84)	117	17 ('82, '83)	59
4. Stefanie Kasperski (1986-90)	119	17 ('90)	49
Debbie Sporchich (1990-94)	95	13 ('91)	40
6. Amanda Johnson (2009-12)	114	11 ('10)	30
7. C. Kraayeveld (2000-05)	109	11 ('02)	28
8. A. Boyer (1993-97)	113	11 ('95, '97)	28
9. Renae Fegent (1994-97)	82	8 ('95)	17
10. Angelina Wolvert (1997-01)	116	5 ('01)	14

Note - Jillian Alleyne set the UO and tied the Pac-12 records with 18 straight double-doubles during the 2013-14 season. She had 21 straight double-doubles over the end of the 2013-14 season and start of 2014-15 season, the third longest streak in NCAA history. Alleyne's 29 double-doubles as a sophomore and 28 as a junior led the nation each year.

SINGLE-GAME THREE-POINT PERCENTAGE

Player	3FG Pct.
1. Kaela Chapdelaine vs. UCLA (Feb. 23, 2008) (6-6)	1.000
2. Micaela Cocks vs. Long Beach State (Dec. 6, 2009) (5-5)	1.000
3. Jennifer Bourn vs. Arizona State (Feb. 2, 1991) (7-8)	.875
4. Lexi Bando vs. SJSU (Nov. 30, 2015) (6-7)	.857
Micaela Cocks vs. Portland (Jan. 26, 2009) (6-7)	.857
Jamie Craighead vs. St. John's (Nov. 30, 2001) (6-7)	.857

Note - Bando's 6-of-7 performance was against SJSU, which is coached by former UO guard Jamie Craighead.

GAME NOTES (Cont.)

9 ranked LSU on Nov. 16, 2003. The last time Oregon upset a top-25 ranked team in its season opener was against No. 16 ranked Wisconsin on Nov. 18, 2000.

STARTING STRONG

Oregon's 11-0 start was the second best in program history. The program record is 21 wins to start the 1978-79 season when the Ducks finished the year 23-2 and 11-0 in the Northwest Basketball League.

122 POINTS VERSUS PORTLAND STATE

The Ducks nearly broke the single-game scoring record with 122 points against Portland State on Dec. 12. UO scored a program-best 131 points in its 2012-13 season opener against CSU Bakersfield.

DIPLOMAS IN HAND

Oregon forward Jacinta Vandenberg, a transfer from Fresno State who redshirted last season, graduated from the UO last season, just her third in college. The native of Australia has two years of eligibility left with the Ducks and has enrolled in a master's program in the UO law school. Senior Lexi Petersen also completed her undergraduate degree already and is currently enroled in a journalism master's program. Kat Cooper, a transfer from Boston College, also has her undergraduate degree.

ALLEYNE'S CAREER DOUBLE-DOUBLES

Jillian Alleyne has 82 double-doubles in her collegiate career, fifth most in NCAA history. She had 29 straight double-doubles running from Jan. 11, 2015 against Oregon State to Jan. 8, 2016, breaking her own previous UO and Pac-12 record of 21 consecutive double-doubles set between her sophomore and junior seasons. She posted 12 double-doubles in her freshman campaign before tallying a UO and Pac-12 record 29 double-doubles in her standout sophomore season. Alleyne had 28 double-doubles last season. Her first career double-double, on Nov. 15, 2012 against Portland State, featured a school record 27 rebounds and a career-high 38 points.

Freshman Year (12)

#	Opponent	Stats
1	Portland St. (11/15/12)	38 points/27 rebs
2	at Nevada (12/9/12)	19 points/18 rebs
3	at Illinois (12/12/12)	24 points/16 rebs
4	Samford (12/18/12)	11 points/19 rebs
5	#16 UCLA (1/4/13)	19 points/12 rebs
6	at Arizona (1/13/13)	18 points/12 rebs
7	at Wash. St. (1/25/13)	15 points/13 rebs
8	#4 Stanford (2/1/13)	13 points/13 rebs
9	Wash. St. (2/17/13)	15 points/17 rebs
10	at #4 Stanford (2/24/13)	12 points/10 rebs
11	#19 Colorado (3/1/13)	10 points/12 rebs
12	vs. Washington (3/7/13)	11 points/15 rebs

Sophomore Year (29)

#	Opponent	Stats
13	Baskersfield (11/9/13)	24 points/16 rebs
14	Portland (11/12/13)	26 points/13 rebs
15	Pepperdine (11/25/13)	21 points/17 rebs
16	Princeton (12/1/13)	27 points/12 rebs
17	at Seattle U (12/4/13)	17 points/16 rebs
18	Portland St. (12/14/13)	18 points/13 rebs
19	Southern (12/18/13)	29 points/18 rebs

20	Cal Poly (12/20/13)	19 points/16 rebs
21	CSUN (12/29/13)	22 points/19 rebs
22	at #4 Stanford (1/3/14)	26 points/13 rebs
23	at #23 California (1/5/14)	21 points/12 rebs
24	Oregon State (1/11/14)	26 points/12 rebs
25	at Oregon State (1/13/14)	19 points/18 rebs
26	at UCLA (1/17/14)	15 points/20 rebs
27	at USC (1/19/14)	21 points/17 rebs
28	Washington St. (1/24/14)	21 points/19 rebs
29	Washington (1/26/14)	34 points/25 rebs
30	at Arizona (1/31/14)	29 points/20 rebs
31	at #15 Arizona St. (2/2/14)	18 points/12 rebs
32	Utah (2/8/14)	18 points/17 rebs
33	USC (2/14/14)	19 points/24 rebs
34	UCLA (2/17/14)	24 points/12 rebs
35	at Washington (2/21/14)	30 points/22 rebs
36	at Wash. St. (2/23/14)	19 points/13 rebs
37	#20 Arizona St. (2/28/14)	29 points/16 rebs
38	Arizona (3/2/14)	18 points/16 rebs
39	vs. Wash. St. (3/6/14)	28 points/21 rebs
40	Pacific (3/6/14)	14 points/18 rebs
41	Washington (3/24/14)	17 points/25 rebs

Junior Year (28)

#	Opponent	Stats
42	Utah State (11/14/14)	20 points/12 rebs
43	#11 N. Carolina (11/25/14)	18 points/17 rebs
44	Portland St. (11/27/14)	17 points/13 rebs
45	C. Michigan (11/28/14)	16 points/17 rebs
46	American (11/29/14)	19 points/10 rebs
47	at Portland (12/5/14)	10 points/10 rebs
48	Navy (12/6/14)	19 points/16 rebs
49	N. Arizona (12/13/14)	20 points/15 rebs
50	Santa Clara (12/18/14)	16 points/20 rebs
51	Fresno State (12/21/14)	26 points/16 rebs
52	Seattle U (12/29/14)	13 points/15 rebs
53	USC (1/3/15)	20 points/15 rebs
54	#11 Oregon State (1/11/15)	16 points/18 rebs
55	Washington (1/16/15)	18 points/15 rebs
56	Washington St. (1/18/15)	23 points/16 rebs
57	at #13 Arizona State (1/23/15)	17 points/12 rebs
58	at Arizona (1/25/15)	12 points/12 rebs
59	UCLA (1/31/15)	30 points/25 rebs
60	USC (2/2/15)	18 points/13 rebs
61	at Washington St. (2/6/15)	20 points/19 rebs
62	at Washington (2/8/15)	19 points/19 rebs
63	Arizona (2/13/15)	19 points/17 rebs
64	#12 Arizona St. (2/15/15)	19 points/10 rebs
65	at Utah (2/20/15)	18 points/13 rebs
66	at Colorado (2/22/15)	21 points/13 rebs
67	#24 California (2/26/15)	33 points/16 rebs
68	#19 Stanford (3/1/15)	22 points/12 rebs
69	vs. Washington State (3/5/15)	18 points/18 rebs

Senior Year (13)

#	Opponent	Stats
70	at #22 N. Carolina (11/15/15)	12 points/15 rebs
71	Hampton (11/19/15)	14 points/10 rebs
72	UC Santa Barbara (11/22/15)	15 points/13 rebs
73	Clemson (11/24/15)	18 points/12 rebs
74	North Dakota (11/28/15)	17 points/11 rebs
75	San Jose State (11/30/15)	26 points/20 rebs
76	Utah Valley (12/5/15)	22 points/19 rebs
77	Portland (12/12/15)	15 points/11 rebs
78	UC Riverside (12/15/15)	25 points/17 rebs
79	Portland State (12/17/15)	21 points/12 rebs

GAME NOTES (Cont.)

80	Seattle U (12/28/15)	23 points/14 rebs
81	at #21 UCLA (1/2/16)	25 points/16 rebs
82	at USC (1/5/16)	23 points/17 rebs

Note - Italic games is Pac-12 record 29-game streak

ALLEYNE MAKES 30-20 LOOK EASY

Jillian Alleyne has posted four 30-20 games in her illustrious career. The forward tallied 30 points and 25 rebounds to go with the game-winning bucket in the Ducks' comeback victory over UCLA on Jan. 31, 2015. Alleyne a pair of 30-20 games against Washington as a sophomore. Her first 30-20 game was as a freshman, a dazzling 38 point and 27 rebound outburst against Portland State. The 27 rebounds is still the UO single-game record.

ALLEYNE UO'S NEW REBS LEADER

At the 3:35 mark in the second quarter against Hampton on Nov. 19, senior Jillian Alleyne blocked a shot and collected the board. It was her sixth rebound of the game and it moved her into first place past Bev Smith on the Ducks' all-time leading rebounder list with 1,363 boards. Smith's record was set in 1981. "Bev Smith was a great player," Alleyne said after the game. "She paved the way for athletes such as myself and my teammates so it was great to break the record and it's a good feeling to get a good win for the team." "Bev and Jillian are two classy women and I think any program would be happy to have them as the faces of the program," said head coach Kelly Graves.

IN ELITE COMPANY

With 28 double-doubles last year, Jillian Alleyne joined Courtney Paris and Chiney Ogwumike as the only players in NCAA history to tally back-to-back seasons with 27-or-more double-doubles. She also joined exclusive company when she reached 450+ rebounds in back-to-back seasons, only the fourth player in NCAA history to accomplish the feat.

ALLEYNE FIFTH TO REACH 500 REBS

With 519 rebounds as a sophomore in 2013-14, Jillian Alleyne led the nation and became just the fifth player in NCAA women's basketball history to reach 500 rebounds in a single-season. Alleyne's 519 boards ranked fifth in NCAA history. Courtney Paris holds the NCAA record with 539 rebounds during the 2005-06 season. Paris reached 500+ boards three times, while Drake's Wanda Ford did it twice in the 1980s. Alleyne has reached 300+ rebounds in each of her first three seasons.

Player	Season	Games	Rebs
Courtney Paris, Okla.	2005-06	36	539
Wanda Ford, Drake	1984-85	30	534
Lacelle Lyles, SEMO	2006-07	31	527
Courtney Paris, Okla.	2006-07	33	526
Jillian Alleyne, Oregon	2013-14	32	519
Wanda Ford, Drake	1985-86	30	506
Anne Donovan, Old Dom.	1982-83	35	504
Courtney Paris, Okla.	2008-09	37	503

ALLEYNE'S SINGLE-GAME DOMINANCE

Now in her senior season, Jillian Alleyne's name litters Oregon's single-game rebound record list. She owns seven of Oregon's top-11 all-time rebounding marks.

1. Jillian Alleyne vs. Port. St. (Nov. 15, 2012)	27
2. Bev Smith vs. Alaska-Anch. (Dec. 9, 1978)	26
3. Jillian Alleyne vs. UCLA (Jan. 31, 2015)	25
Jillian Alleyne vs. Wash. (Mar. 24, 2014)	25
Jillian Alleyne vs. Wash. (Jan. 26, 2014)	25
6. Jillian Alleyne vs. USC (Feb. 14, 2014)	24
7. Jillian Alleyne vs. Okla. (Nov. 24, 2012)	23
Peg Rees vs. Western Wash. (Feb. 10, 1975)	23
9. Jillian Alleyne at Wash. (Feb. 21, 2014)	22
C. Kraayeveld at Montana (Dec. 19, 2002)	22
Alison Lang vs. LSU (Dec. 16, 1981)	22

DUCKS PICKED EIGHTH IN PRESEASON

Oregon was picked to finish eighth in the Pac-12 preseason polls by both the coaches and league's media.

LAST TIME RANKED

Oregon has not been ranked since the Ducks checked in at No. 21 in the AP poll on Dec. 15, 2003.

ALLEYNE PRESEASON ALL-AMERICAN

Jillian Alleyne was named an honorable mention preseason All-American by the Associated Press on Nov. 10. The senior was a third-team All-American at the conclusion of her junior year and honorable mention All-American as a sophomore.

Breanna Stewart	UConn
Nina Davis	Baylor
Tiffany Mitchell	South Carolina
Kelsey Mitchell	Ohio State
Morian Jefferson	UConn

Honorable Mention - Diamond DeShields, Brianna Turner, **Jillian Alleyne**, A'ja Wilson, Adut Bulgak, Aerial Powers, Morgan Tuck, Courtney Williams

ESPNW PRESEASON TOP PLAYERS

In its preseason list of the top-25 players in the NCAA this season, ESPNW picked Jillian Alleyne at No. 16. ESPN's Michelle Smith said about Alleyne - "The second-leading rebounder in the nation last season, Alleyne is a powerhouse on the boards."

ALLEYNE PRESEASON ALL-PAC-12

In addition to her honorable mention preseason All-America status, Jillian Alleyne was named preseason all-Pac-12 as well.

Jillian Alleyne, Sr.	Oregon
Sophie Brunner, Jr.	Arizona State
Nirra Fields, Sr.	UCLA
Ruth Hamblin, Sr.	Oregon State
Kelsey Plum, Jr.	Washington
Sydney Wiese, Jr.	Oregon State

ALLEYNE FASTEST DUCK TO 1,000 POINTS

As a sophomore, Jillian Alleyne reached 1,000 career points on Feb. 28, 2014 against No. 20 Arizona State. She did it faster than any player in school history as she is the only sophomore at Oregon to ever reach the milestone. She was the 25th player overall to reach 1,000 career points. At this rate she could join Alison Lang (1980-84) and Bev Smith (1978-92) as the only players in school history to reach 2,000 career points.

TRAINING TRIP TO VEGAS

Kelly Graves prefers to play a closed scrimmage and an exhibition instead of two exhibition games before starting the season. Last year the Ducks faced Oklahoma in a closed scrimmage at the Olympic Training Center in Colorado Springs, Colo. This season Oregon met BYU at UNLV's Cox Pavillion in Las Vegas.

CAMPBELL PROMOTED TO ASSOCIATE HC

Women's basketball assistant coach Mark Campbell has been promoted to associate head coach, head coach Kelly Graves announced on Monday. "Mark is an incredibly valuable piece of my coaching staff," said Graves. "He's a tireless worker and tremendous recruiter. He has incredible knowledge of the game and has the ability to teach that to our players. He's the whole package." Campbell was instrumental in helping the Ducks land the No. 7 ranked recruiting class in the nation this year, featuring four top-100 ranked players according to ESPNW.com. "I am humbled by this promotion and extremely grateful for the opportunity Coach Graves has given me to be a part of this amazing staff and athletic department," Campbell said. "I am very excited about the foundation we are laying here and the future of Oregon women's basketball." Campbell, in his second season in Eugene, was the associate head coach at Oregon State before joining the Ducks for the 2014-15 season. He helped turn around the OSU program and was the point person in landing multiple top-notch recruiting classes, including four top-100 players. Specializing in player development, Campbell has a long history of recruiting and developing guards. In each of his five seasons in the Pac-12, he mentored freshman all-league guards Alyssa Martin (2011), Ali Gibson (2012), Jamie Weisner (2013), Sydney Weise (2014) and Lexi Bando (2015).

GRUYS EARNS SCHOLARSHIP

Walk-on Katie Gruys was surprised with a scholarship on May 18, 2015 during spring practices by head coach Kelly Graves. The forward is on a full ride this season after spending three seasons as a walk-on. The native of Maple Lake, Minn., originally came to Eugene to walk on to the Ducks' highly successful track and field program as a javelin thrower. A back injury early in the fall, however, limited her participation in practice and she decided to try another sport. With Oregon's team ravaged by injury in a four-win 2012-13 season, Gruys joined the squad and appeared in 13 games, making her debut against Illinois on Dec. 12, 2012. She played in 13 games again as a sophomore before appearing in 19 games last season as a junior.

OREGON ADDS PURDUE TRANSFER

Former Purdue guard Justine Hall has transferred to Oregon, head coach Kelly Graves announced on Jan. 6, 2016. Hall, a 5-foot-10 guard, will enroll in the university immediately and be eligible for competition after the fall quarter next year as a junior. "I am thrilled to have Justine join our program," Graves said. "I have followed her career through high school and at Purdue and always felt her combination of tremendous work ethic, strong skill set, incredible athleticism and high basketball IQ would be a perfect fit for our program. It's

never easy to transfer mid-year, but I am very confident Justine will transition well, our team will embrace her with open arms and that she will become a great Duck.” The Denver, Colo., native and graduate of Regis Jesuit HS appeared in 10 games this season after appearing in 20 games last year as a freshman. Hall was named the Gatorade Colorado Player of the Year as a senior in high school after helping Regis Jesuit HS to back-to-back state titles. She averaged 15.9 points and 2.5 steals per game as a senior and 17 points per game as a junior. Hall was rated the No. 74 recruit in the nation by ESPNW in 2014 after earning three first-team all-conference honors and 2013 Colorado 5A state tournament MVP honors. “This was one of the hardest decisions I have ever had to make because of my teammates and everyone I was involved with at Purdue,” Hall said. “I am very thankful for the time and effort that was invested in me athletically and academically. I am looking forward to this new opportunity at Oregon and to grow as a person and a player and improve every day. I am very excited to be closer to family and I look forward to seeing them more often.” Justine’s father, Darryl Hall, was a defensive back at Washington before playing for the Denver Broncos in 1993 and 1994 and the San Francisco 49ers in 1995. Her sister, Janae, plays volleyball at Kansas.

GRAVES SIGNS NO. 7 RANKED CLASS

Head coach Kelly Graves has announced a six-member 2015-16 recruiting class, ranked No. 7 in the nation by ESPN. The Ducks have signed guards Jayde Woods (Los Angeles, Calif.) and Morgan Yeager (Adelaide, Australia) plus forwards Sierra Campisano (San Diego, Calif.), Mallory McGwire (Reno, Nevada), Ruthy Hebard (Fairbanks, Alaska) and Lydia Giomi (Seattle, Wash.). “Today is a great day in the history of the University of Oregon women’s basketball program,” said Graves. “When my staff and I set out on this journey in the spring of 2014, we collectively felt the 2016 class could be a special class, one that would help define the program for years to come. Today, we are realizing the first step in making that a reality. We’ve gotten the right people for the right program. Character and class wins and this group is loaded with both qualities. Each one of these young women are ‘team first’ players, hard workers, dedicated to improving, goal driven and excited about helping the Ducks become one of the nation’s elite programs. Each one of these young women are outstanding students, active participants in their communities and the kind of individuals that will be proud representatives of our university and basketball program.” The group features four ESPN top-100 players, four forwards all 6-foot-3 or taller and a pair of guards. Campisano, the No. 14 ranked recruit in the nation, is the highest rated prospect to ever sign with the Ducks. Hebard (No. 41), McGwire (No. 59) and Woods (No. 96) are also ranked in the top-100 by ESPN.

GRAVES ON JAYDE WOODS

“Jayde is one of the most physically and mentally tough players in the country. Considered one of the nation’s premiere defenders and most versatile players, Jayde has the ability to defend and play every position on the court which will make her a valuable piece to our basketball program. She has the ability to impact the game in ways

other than just stats and that is valuable and rare. I love that Jayde is such a well-rounded person—an excellent student and very active in her community and school charitable events and programs. Jayde is such a humble person and a great teammate—we couldn’t be more excited that she is part of our Duck family.”

GRAVES ON SIERRA CAMPISANO

“Sierra is perhaps the most skilled tall player in the country. Her ability to shoot with range, off the bounce, post up and finish with either hand inside makes her truly special. Her length, timing, and tenacity make her a force defensively too. She has a motor that never turns off and her willingness to work so hard is quite an example to her teammates. Truly a gym rat, she is constantly in the gym working to get better and I see an amazing future her in the college game and beyond. Sierra is the whole package when it comes to being a great person—she’s an elite student and is very involved in her school and community and her personality and friendliness is infectious. We are so thrilled to have Sierra as a Duck.”

GRAVES ON MALLORY MCGWIRE

“Simply put, Mallory is an incredibly gifted basketball talent and person. She has great hands, great feet, and a big heart—the three most important things a post player can possess. She’s so athletic and runs so well for a person of her size. Her potential as a basketball player is off the charts. She’s incredibly accomplished yet I have no doubt her best basketball is ahead of her and when she puts it all together, watch out basketball world. I expect Mallory to have an impact in every phase of the game. Her soft touch is amazing and her ability to get a rebound, outlet quickly and run the floor reminds me of Kevin Love. She has an infectious personality, is a fun-loving person on and off the court. Mallory is going to be a great Duck and one of those players fans will fall in love with.”

GRAVES ON MORGAN YEAGER

“Morgan is such a competitor and has played at such a high level, having played in the highly competitive Australian National Team program (17U World Championships) as well as the WNBL, the second best professional league in the world. She will be ready to for Division 1 college basketball from the day she steps on the Oregon campus because of her high basketball IQ and ability to play multiple positions. I love how aggressive she plays—she gets to the rim and can finish, gets to the free throw line a lot, can shoot the three-pointer. She’s a great defender and has great feet, excellent quickness and body control. Perhaps most important is that she is a tremendous leader, a hard worker and great teammate. She’s a basketball junkie. Morgan is a great student with a fun personality who has a bright, bright future. I’m so glad that a person of her abilities and character will be part of our Duck family.”

GRAVES ON LYDIA GIOMI

“Lydia has such an amazing future ahead of her. In my 29 years as a coach, I don’t know if I’ve ever seen a player with her combination of length and athleticism and her desire to achieve at a high level. She runs the floor like a guard, shows a real understanding of defensive

positioning and I love that she is so vocal on the floor. She’s a very humble yet effective leader, liked by all her teammates and respected by her competitors. I think defensively she’ll make a huge impact early and, as her offensive game develops, watch out! She has a nice mid-range touch and finishes well inside and in transition. We are truly blessed to have someone of Lydia’s character and talents in our Oregon program.”

GRAVES ON RUTHY HEBARD

“Ruthy is one of the most gifted athletes in the world. Her abilities are so untapped and upside so vast that she can become of the best players in all of college basketball. I’m excited to see where that future takes her. Ruthy is one of the nicest, most genuine people—a great fit for a program like ours that recruits character and class. Ruthy’s versatility will allow her to play inside and out, and guard both posts and guards. Her length, athleticism, and tenacity will allow her to be an elite rebounder. I am so pumped that Ruthy is a Duck and I look forward to sharing a great journey with her.”

A PROVEN WINNER - HEAD COACH KELLY GRAVES



HC

KELLY GRAVES

EXPERIENCE

Oregon Experience	Second Season
Oregon Record	24-21 (6-16 Pac-12)
Head Coach Experience	22nd Season
Head Coach Record	451-223
Alma Mater	New Mexico, 1988

HEAD COACHING CAREER

Big Bend CC (1989-92)

- Three seasons at the helm
- Took a four win team to a 23-10 record in his final season.
- Originally took a job as an assistant with the men's team but was named the women's head coach when the position opened up.

Saint Mary's (1997-2000)

- Three seasons as head coach
- Took the head job at Saint Mary's after working as an assistant for four seasons at Portland.
- Took Saint Mary's to its first NCAA Tournament in 1998-99.

Gonzaga (2000-14)

- Took the Zags to seven NCAA Tournaments in his 14 years as the head coach, including two Sweet 16 appearances and one Elite Eight during the 2010-11 season.
- Eight-time WCC Coach of the Year
- 10-straight WCC titles (2005-14)
- Went 5-23 in his first season in Spokane, including a 0-14 record in WCC play. Lost just 12 total WCC games in his final 10 seasons.

Oregon (2014-pres.)

- In his first season, led UO to first win over Stanford since 2004.

Kelly Graves is in his second season at the helm of the Oregon women's basketball program. Graves was named the seventh head coach in program history on April 7, 2014. Graves went 13-17 in his first season with the Ducks in 2014-15, taking a team built to run-and-gun under former head coach Paul Westhead and instilling strong fundamentals and a tough defense-first philosophy. Oregon held their opponents under 70 points 14 times in 2014-15 after allowing an NCAA-worst 89.1 points per game in 2013-14.

The new offense also got going as Graves led his Ducks to a 66-64 win over No. 19 ranked Stanford in the regular season finale, UO's first win against the Cardinal since 2004. Forward Jillian Alleyne had 22 points and 12 rebounds in that contest, one of her 28 double-doubles on the season. The junior was named a third team All-American and first team all-Pac-12 following the season, making the jump from honorable mention on both lists as a sophomore. Graves brings in six newcomers and two redshirts for the 2015-16 season, including 6-foot-5 Jacinta Vandenberg, a Fresno State transfer who impressed in practice last year while sitting out. The six newcomers includes Spanish U19 national team point guard Maite Cazorla, Canadian U19 national team forward Lauren Yearwood and Gonzaga Prep forward Oti Gildon, the No. 37 ranked recruit in the nation last year.

Oregon is Graves' fourth head coaching position, previously leading the programs at Big Bend Community College (1989-92), Saint Mary's (1997-2000) and Gonzaga (2000-14). Graves' coaching career started at Big Bend CC in Moses Lake, Wash., where he accepted an assistant coaching position on the men's team, but after the women's coach left, he moved over to lead the women's program instead. In three seasons (1989-90 through 1991-92) Graves took a four win team his first season to a 23-10 record in his final year. Graves left Big Bend CC to become an assistant coach under Jim Sollars at the University of Portland prior to the 1992-93 season. Following four years with the Pilots, Graves was named the head coach at Saint Mary's for the 1997-98 campaign.

Graves advanced to his first NCAA Tournament with the Gaels during the 1998-99 season, his second of three seasons at Saint Mary's, and went to seven more over 14 seasons at Gonzaga. Graves left Saint Mary's for Gonzaga for the 2000-01 seasons. His first year with the Bulldogs, his team went 5-23, including 0-14 in WCC play. But by his third year at Gonzaga, the Bulldogs went 18-12 overall and went to the WNIT the following season. Gonzaga won the first of 10 straight WCC titles under Graves during the 2004-05 campaign when his squad went 28-4 overall and 14-0 in league play. Including that year, Graves and Gonzaga lost just 12 total conference games over his final 10 years leading the program. Gonzaga's first NCAA Tournament appearance came in 2006-07, when the Bulldogs went 24-10 and 13-1 in WCC, and after a WNIT bid in 2007-08, Gonzaga advanced to six straight NCAA Tournaments. Graves and the 'Zags advanced to the Sweet 16 for three straight years (2010, 2011, 2012) and went to the Elite 8 in 2011. Overall, Graves brought eight West Coast Conference Coach of the Year awards and a 382-162 (.696) Div. I head coaching record to Eugene in 2014, with a 427-202 record overall before joining the Ducks.

"Kelly Graves is a great guy and one of the best coaches in America," said UConn head coach Geno Auriemma. "Oregon is a place with tremendous women's basketball potential and Kelly is the perfect person to lead the Ducks to the next level. I won't be surprised when Oregon is competing for Pac-12 championships, and contending on a national level, in the near future."

Graves is an active member of the WBCA (Women's Basketball Coaches Association) and currently sits on the Board of Directors. Graves added USA Basketball to his resume in the summer of 2012, becoming an assistant coach with the U18 women's basketball squad and helping the team to a gold medal at the 2012 FIBA Americas. He again coached for USA Basketball in the summer of 2013. As an assistant with Team USA, he helped the U19 squad with the FIBA World Championship for Women. Another coach on the U19 staff was current Miami head coach, Katie Meier.

"Kelly is a tremendous teacher of the game," Meier said. "His teams are always disciplined, smart, fun to watch and display the same enthusiasm and love for the game that he possesses. He builds winning cultures first, which leads to championship teams. Oregon has made a tremendous hire. Kelly is a talented coach full of integrity and a man who treats his players as family."

GRAVES' YEAR-BY-YEAR DIV. I HEAD COACHING RECORD *(Excludes three seasons at Big Bend CC)*

Year	School	Record	Pct.	Year	School	Record	Pct.
1997-98	St. Mary's (CA)	20-9	.690	2008-09	Gonzaga	27-7	.794
1998-99	St. Mary's (CA)	26-7	.788	2009-10	Gonzaga	29-5	.853
1999-00	St. Mary's (CA)	20-10	.667	2010-11	Gonzaga	31-5	.861
2000-01	Gonzaga	5-23	.179	2011-12	Gonzaga	28-6	.824
2001-02	Gonzaga	11-18	.379	2012-13	Gonzaga	27-6	.818
2002-03	Gonzaga	18-12	.600	2013-14	Gonzaga	29-5	.853
2003-04	Gonzaga	18-12	.600	2014-15	Oregon	13-17	.433
2004-05	Gonzaga	28-4	.875	2015-16	Oregon	11-4	.734
2005-06	Gonzaga	16-14	.533	Totals	3 Schools/19 Years	406-183	.691
2006-07	Gonzaga	24-10	.706				
2007-08	Gonzaga	25-9	.735				

2015-16 OREGON WOMEN'S BASKETBALL PHOTO/TWITTER ROSTER



14 Jillian Alleyne
@Superrjaay



10 Lexi Bando
@lexibando10



11 Liz Brenner
@ElizBrenner



4 Maite Cazorla
@MaiteCazorla5



44 Kat Cooper
N/A



32 Oti Gildon
@OtiGildon



51 Katie Gruys
@watchk8



5 Jordan Loera
N/A



13 Mar'Shay Moore
@MooreMarshay13



33 Lexi Petersen
@lexip33



12 Megan Trinder
@megsietrinder



15 Jacinta Vandenberg
@jacinta_15



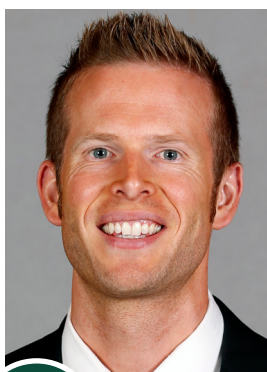
22 Lauren Yearwood
@laurenyearwood



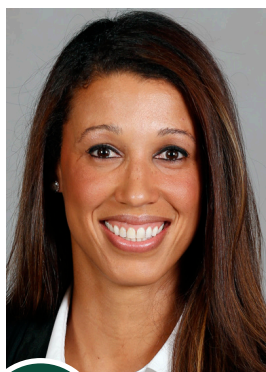
HC Kelly Graves
@GoDucksKG



AC Jodie Berry
@UOCoachJKB



AC Mark Campbell
@GoDucksMC



AC Nicole Powell
GoDucksNP



OPS Stephanie Wheeler-Smith
@GoDucksSWS

PRESEASON QUICK FACTS

UNIVERSITY INFORMATION

Name	University of Oregon
Location	Eugene, Ore.
Founded	1876
Enrollment	24,500
Average Freshman HS GPA	3.58
Nickname	Ducks
Colors	Green (342 5C) & Yellow (Yellow C)
Apparel Provider	Nike
President	Michael Schill
Athletics Director	Rob Mullens
Faculty Athletics Rep	Tim Gleason
Arena	Matthew Knight Arena (12,369)
Arena Press Row Phone	541-346-4497
Television	Pac-12 Networks & Pac-12 Live Stream
Radio	KUGN 590

PROGRAM HISTORY

First Season of Competition	1973-74
All-Time Record (41 seasons)	682-496 (.579)
Matthew Knight Arena Record	40-38 (.513)
Pac-12 Championships (Last)	2 (1999-2000)
Pac-12 Tournament Record	4-14
Postseason Championships	2 (WNIT - 2002, 1989)
Postseason Record	21-18
NCAA Appearances (Record)	12 (5-12)
WNIT Appearances (Record)	6 (14-4)

TEAM INFORMATION

2014-15 Record	13-17 (6-12 Pac-12, T9th)
2014-15 Postseason	None
2014-15 Final Ranking	None
Starters Returning/Lost (Min. 18 Starts)	3/2
Letterwinners Returning/Lost	5/8
Redshirts Returning/Lost	2/0
Newcomers	6 (4 Freshman, 2 JC)
Points Returning/Pct	1280 (65.3%)
Rebounds Returning/Pct	707 (61.3%)
Assists Returning/Pct	235 (59.3%)
Steals Returning/Pct	58 (58.6%)
Blocks Returning/Pct	89 (56.7%)

ATHLETICS COMMUNICATIONS

Women's Basketball Contact	Joe Waltasti
Office Phone	541-346-7332
Cell Phone	916-889-6643
E-Mail	waltasti@uoregon.edu
Twitter	@GoDucksJoe

COACHING STAFF

Head Coach	Kelly Graves (New Mexico, 1988)
Twitter	@GoDucksKG
Oregon Career (Record)	Second Season (13-17)
Div. I Career (Record)	19th Season (395-179)
Collegiate Career (Record)	22nd Season (440-219)
Assistant Coach	Jodie Berry (2nd)
Twitter	@UOCoachJKB
Assistant Coach	Mark Campebl (2nd)
Twitter	@GoDucksMC
Assistant Coach	Nicole Powell (2nd)
Twitter	@GoDucksNP

SUPPORT STAFF

Director of Ops	Stephenie Wheeler-Smith (2nd)
Athletic Trainer	Tori Noda (8th)
Strength & Conditioning	Mark Davis (4th)
Asst. Strength & Conditioning	Xavi Lopez (2nd)
Administrative Assistant	Illya Lebow

STARTERS RETURNING (Min. 18 Starts)

Name	Pos.	GS-GP	PPG	RPG	
APG					
Jillian Alleyne	F	30-30	18.4	15.2	1.2
Lexi Petersen	G	30-30	11.1	3.7	3.7
Lexi Bando	G	28-28	10.4	2.6	2.0

LETTERWINNERS RETURNING

Name	Pos.	GS-GP	PPG	RPG	
APG					
Jillian Alleyne	F	30-30	18.4	15.2	1.2
Lexi Petersen	G	30-30	11.1	3.7	3.7
Lexi Bando	G	28-28	10.4	2.6	2.0
Jordan Loera	G	2-23	4.3	2.3	1.3
Katie Gruys	F	0-19	0.3	0.9	0.1

LETTERWINNERS LOST

Name	Pos.	GS-GP	PPG	RPG	
APG					
Katelyn Loper	G	7-29	9.2	3.3	0.8
Amanda Delgado	G	18-30	4.7	1.6	1.1
Drea Toler	G	12-29	4.4	2.0	3.0
Megan Carpenter	C	20-29	2.8	2.4	0.4
Tatum Neubert	F	3-23	2.2	1.7	0.3
Janitah Iamaleava	F	0-3	1.3	0.7	0.0
Marie Berthuel	G	0-7	0.9	0.3	0.0
Chloe Stiles	G	0-4	0.5	0.3	0.0

UPDATED ALL-TIME SERIES RECORDS (2015-16 OPPONENTS ONLY)

Opponent	Home	Away	Neut	Overall	Last
Arizona	20-8	12-17	1-2	33-27	2015
Arizona State	19-10	10-19	1-3	30-32	2015
California	22-11	14-17	0-3	36-31	2015
Clemson	1-0	-	-	1-0	2016
Colorado	4-2	4-3	2-2	10-7	2015
Hampton	1-0	-	-	1-0	2016
North Carolina	0-1	1-0	-	1-1	2016
North Dakota	2-0	1-0	-	3-0	2016
Oregon State	32-12	24-22	3-3	59-37	2016
Portland	18-0	9-5	-	27-5	2015
Portland State	13-5	12-4	1-1	26-10	2016
San Jose State	5-0	3-1	2-0	10-1	2016
Seattle U	6-0	2-0	1-0	9-0	2016
Stanford	8-21	1-27	-	9-48	2015

Opponent	Home	Away	Neut	Overall	Last
UC Riverside	1-1	-	-	1-1	2016
UC Santa Barbara	3-0	1-1	1-0	5-1	2016
UCLA	17-12	10-21	0-1	27-34	2016
USC	12-18	6-27	-	18-45	2016
Utah	8-2	2-7	1-0	11-9	2015
Utah Valley	1-0	-	-	1-0	2016
Washington	27-16	13-28	4-6	44-50	2015
Washington State	31-6	27-10	4-2	62-18	2015

- For last meeting, second half of the season is used. Example 2013-14 = 2014

- Updated to include this season's games

AP POLL

Week 10 (Released on Mondays)

RK	TEAM	RECORD	PTS
1	Connecticut (32)	14-0	800
2	South Carolina	15-0	765
3	Notre Dame	15-1	735
4	Texas	15-0	706
5	Ohio State	12-3	640
6	Baylor	16-1	632
7	Mississippi State	16-1	621
8	Maryland	14-2	592
9	Kentucky	13-1	543
10	Arizona State	12-3	502
11	Stanford	13-3	447
12	Oregon State	12-3	406
13	Tennessee	11-4	371
14	Oklahoma	12-3	358
15	Texas A&M	12-4	301
16	Florida State	11-4	293
17	UCLA	11-4	287
18	Michigan State	12-3	265
19	South Florida	10-4	234
20	Florida	14-2	134
21	Miami (FL)	15-2	121
22	Duke	12-5	116
23	Louisville	12-5	111
24	Missouri	14-2	99
25	USC	14-2	69

Others receiving votes: Northwestern 58, DePaul 50, Purdue 47, West Virginia 18, Duquesne 17, Syracuse 13, California 12, Oklahoma State 9, St John's 7, UTEP 6, Iowa 6, Green Bay 3, Seton Hall 2, South Dakota State 2, Utah 2

USA TODAY COACHES POLL

Week 10 (Released on Tuesdays)

RK	TEAM	PTS	LAST	1ST
1	Connecticut (14-0)	800	1	32
2	South Carolina (15-0)	768	2	0
3	Notre Dame (15-1)	732	3	0
4	Texas (15-0)	708	4	0
5	Ohio State (12-3)	655	5	0
6	Mississippi State (16-1)	625	6	0
7	Baylor (16-1)	618	7	0
8	Maryland (14-2)	587	8	0
9	Kentucky (13-1)	528	9	0
10	Oregon State (12-3)	481	12	0
11	Texas A&M (12-4)	454	10	0
12	Stanford (13-3)	436	13	0
13	Arizona State (13-3)	419	14	0
14	Florida State (12-4)	370	15	0
15	Tennessee (11-4)	322	11	0
16	South Florida (10-4)	278	18	0
17	Oklahoma (12-3)	263	19	0
18	Michigan State (12-3)	259	22	0
19	Duke (12-5)	175	16	0
20	Miami (Fla.) (15-2)	150	not ranked	0
21	Florida (14-2)	112	not ranked	0
22	Louisville (12-5)	96	not ranked	0
23	UCLA (11-4)	93	21	0
24	Northwestern (12-4)	81	17	0
T25	Duquesne (15-1)	65	not ranked	0
T25	DePaul (12-6)	65	24	0

Others receiving votes: St. John's (13-3) 53; Syracuse (12-4) 49; Seton Hall (13-3) 48; Iowa (12-4) 29; Missouri (14-2) 28; Oklahoma State (12-3) 10; California (10-5) 9; Southern California (14-2) 7; North Carolina (12-6) 6; Wisconsin-Green Bay (13-2) 5; North Carolina State (12-5) 4; Georgia (12-4) 3; Virginia (12-5) 3; Virginia Tech (13-3) 3; George Washington (13-3) 2; South Dakota State (13-3) 1.

2015-16 OVERALL STATISTICS

RECORD:	OVERALL	HOME	AWAY	NEUTRAL
ALL GAMES	11-4	10-1	1-3	0-0
CONFERENCE	0-4	0-1	0-3	0-0
NON-CONFERENCE	11-0	10-0	1-0	0-0

##	Player	gp-gs	min	avg	Total		3-Point		F-Throw		Rebounds				pf	dq	a	to	blk	stl	pts	avg
					fg-fga	fg%	3fg-fga	3fg%	ft-fta	ft%	off	def	tot	avg								
14	Alleyne, Jillian	15-15	453	30.2	109-189	.577	0-0	.000	54-90	.600	72	129	201	13.4	31	1	30	35	16	22	272	18.1
33	Petersen, Lexi	15-15	473	31.5	81-163	.497	25-65	.385	17-25	.680	17	27	44	2.9	28	0	39	34	11	16	204	13.6
10	Bando, Lexi	15-15	403	26.9	49-122	.402	28-66	.424	25-30	.833	6	27	33	2.2	31	0	21	21	2	13	151	10.1
04	Cazorla, Maite	15-15	479	31.9	52-120	.433	20-54	.370	12-20	.600	7	29	36	2.4	26	0	98	39	2	35	136	9.1
15	Vandenberg, Jacinta	15-15	338	22.5	50-98	.510	0-0	.000	5-15	.333	17	66	83	5.5	41	1	31	26	24	7	105	7.0
11	Brenner, Liz	15-0	190	12.7	33-60	.550	0-0	.000	17-26	.654	18	22	40	2.7	17	0	10	18	5	8	83	5.5
44	Cooper, Kat	15-0	158	10.5	27-63	.429	21-51	.412	8-10	.800	6	16	22	1.5	14	0	11	8	1	1	83	5.5
32	Gildon, Oti	15-0	152	10.1	18-40	.450	5-14	.357	8-12	.667	10	19	29	1.9	17	0	3	12	4	3	49	3.3
13	Moore, Mar'Shay	13-0	118	9.1	13-34	.382	5-13	.385	9-12	.750	3	7	10	0.8	15	0	5	10	3	8	40	3.1
05	Loera, Jordan	15-0	143	9.5	10-27	.370	8-20	.400	6-6	1.000	3	9	12	0.8	11	0	16	10	0	9	34	2.3
22	Yearwood, Lauren	11-0	76	6.9	10-19	.526	0-0	.000	2-7	.286	10	16	26	2.4	5	0	5	8	3	3	22	2.0
51	Gruys, Katie	6-0	17	2.8	0-3	.000	0-0	.000	0-0	.000	1	2	3	0.5	2	0	0	3	0	0	0	0.0
Team											29	27	56		1		2					
Total.....		15	3000		452-938	.482	112-283	.396	163-253	.644	199	396	595	39.7	239	2	269	226	71	125	1179	78.6
Opponents.....		15	3000		360-899	.400	73-228	.320	162-238	.681	162	318	480	32.0	267	-	183	236	56	113	955	63.7

TEAM STATISTICS	ORE	OPP	Date	Opponent	Score	Att.
SCORING	1179	955	11/15/15	at North Carolina	w 79-77	2036
Points per game	78.6	63.7	11/19/15	HAMPTON	w 86-51	956
Scoring margin	+14.9	-	11/22/15	UC SANTA BARBARA	w 79-51	1468
FIELD GOALS-ATT	452-938	360-899	11/24/15	CLEMSON	w 69-56	1188
Field goal pct	.482	.400	11/28/15	NORTH DAKOTA	w 77-51	1141
3 POINT FG-ATT	112-283	73-228	11/30/15	SAN JOSE STATE	w 104-74	1066
3-point FG pct	.396	.320	12/5/15	UTAH VALLEY	w 79-68	1033
3-pt FG made per game	7.5	4.9	12/12/15	PORTLAND	w 93-52	1737
FREE THROWS-ATT	163-253	162-238	12/15/15	UC RIVERSIDE	w 95-81	1481
Free throw pct	.644	.681	12/17/15	PORTLAND STATE	w 122-59	1258
F-Throws made per game	10.9	10.8	12/28/15	SEATTLE U	w 82-62	1923
REBOUNDS	595	480	* 01/02/16	at UCLA	L 69-80	1443
Rebounds per game	39.7	32.0	* 1/4/16	at USC	L 67-74	565
Rebounding margin	+7.7	-	* 1/8/16	at Oregon State	L 33-60	4462
ASSISTS	269	183	* 1/10/16	OREGON STATE	L 45-59	2806
Assists per game	17.9	12.2				
TURNOVERS	226	236				
Turnovers per game	15.1	15.7				
Turnover margin	+0.7	-				
Assist/turnover ratio	1.2	0.8				
STEALS	125	113				
Steals per game	8.3	7.5				
BLOCKS	71	56				
Blocks per game	4.7	3.7				
ATTENDANCE	16057	8506				
Home games-Avg/Game	11-1460	4-2126				
Neutral site-Avg/Game	-	0-0				

* - Conference game

Score by Periods	1st	2nd	3rd	4th	Totals
Oregon	294	294	304	287	1179
Opponents	250	201	249	255	955

2015-16 CONFERENCE GAMES ONLY

RECORD:	OVERALL	HOME	AWAY	NEUTRAL
ALL GAMES	0-4	0-1	0-3	0-0
CONFERENCE	0-4	0-1	0-3	0-0
NON-CONFERENCE	0-0	0-0	0-0	0-0

#	Player	gp-gs	min	avg	Total		3-Point		F-Throw		Rebounds								a	to	blk	stl	pts	avg
					fg-fga	fg%	3fg-fga	3fg%	ft-fa	ft%	off	def	tot	avg	pf	dq								
14	Alleyne, Jillian	4-4	137	34.2	24-65	.369	0-0	.000	16-27	.593	15	34	49	12.3	12	1	2	11	1	8	64	16.0		
33	Petersen, Lexi	4-4	132	33.0	14-41	.341	2-8	.250	7-8	.875	0	8	8	2.0	9	0	7	12	0	3	37	9.3		
04	Cazorla, Maite	4-4	143	35.8	12-37	.324	4-12	.333	1-2	.500	1	5	6	1.5	12	0	15	20	0	8	29	7.3		
15	Vandenberg, Jacinta	4-4	101	25.3	12-22	.545	0-0	.000	1-4	.250	5	19	24	6.0	14	1	3	5	3	1	25	6.3		
11	Brenner, Liz	4-0	45	11.3	9-17	.529	0-0	.000	5-8	.625	4	6	10	2.5	3	0	0	5	0	1	23	5.8		
10	Bando, Lexi	4-4	107	26.8	3-17	.176	1-8	.125	4-4	1.000	1	6	7	1.8	11	0	2	4	1	4	11	2.8		
13	Moore, Mar'Shay	3-0	38	12.7	2-10	.200	1-4	.250	3-4	.750	1	1	2	0.7	1	0	1	1	0	3	8	2.7		
32	Gildon, Oti	4-0	33	8.3	3-8	.375	1-4	.250	3-5	.600	3	2	5	1.3	3	0	0	1	0	0	10	2.5		
22	Yearwood, Lauren	1-0	10	10.0	1-2	.500	0-0	.000	0-0	.000	1	0	1	1.0	1	0	0	0	0	2	2	2.0		
05	Loera, Jordan	4-0	29	7.3	1-4	.250	1-2	.500	2-2	1.000	0	1	1	0.3	1	0	2	0	0	1	5	1.3		
44	Cooper, Kat	4-0	25	6.3	0-7	.000	0-6	.000	0-0	.000	0	0	0	0.0	4	0	2	0	0	0	0	0.0		
Team											12	11	23				2							
Total.....		4	800		81-230	.352	10-44	.227	42-64	.656	43	93	136	34.0	71	2	34	61	5	31	214	53.5		
Opponents.....		4	800		101-225	.449	17-47	.362	54-72	.750	38	119	157	39.2	73	-	57	60	21	30	273	68.2		

TEAM STATISTICS	ORE	OPP	Date	Opponent	Score	Att.
SCORING	214	273	* 01/02/16	at UCLA	L 69-80	1443
Points per game	53.5	68.2	* 1/4/16	at USC	L 67-74	565
Scoring margin	-14.7	-	* 1/8/16	at Oregon State	L 33-60	4462
FIELD GOALS-ATT	81-230	101-225	* 1/10/16	OREGON STATE	L 45-59	2806
Field goal pct	.352	.449	* - Conference game			
3 POINT FG-ATT	10-44	17-47				
3-point FG pct	.227	.362				
3-pt FG made per game	2.5	4.3				
FREE THROWS-ATT	42-64	54-72				
Free throw pct	.656	.750				
F-Throws made per game	10.5	13.5				
REBOUNDS	136	157				
Rebounds per game	34.0	39.2				
Rebounding margin	-5.2	-				
ASSISTS	34	57				
Assists per game	8.5	14.3				
TURNOVERS	61	60				
Turnovers per game	15.3	15.0				
Turnover margin	-0.2	-				
Assist/turnover ratio	0.6	1.0				
STEALS	31	30				
Steals per game	7.8	7.5				
BLOCKS	5	21				
Blocks per game	1.3	5.3				
ATTENDANCE	2806	6470				
Home games-Avg/Game	1-2806	3-2157				
Neutral site-Avg/Game	-	0-0				

Score by Periods	1st	2nd	3rd	4th	Totals
Oregon	50	60	36	68	214
Opponents	72	43	78	80	273

2015-16 OREGON TEAM STATS

TEAM STATISTICS

Opponent	Date	Score		Total		3-Pointers		Free throws		Rebounds				pf	a	t/o	blk	stl	pts	avg
				fg-fga	pct	3fg-fga	pct	ft-fta	pct	off	def	tot	avg							
at North Carolina	11/15/15	79-77	W	30-59	.508	13-29	.448	6-10	.600	10	25	35	35.0	20	21	16	4	5	79	79.0
HAMPTON	11/19/15	86-51	W	32-64	.500	9-25	.360	13-17	.765	17	30	47	41.0	11	24	16	7	7	86	82.5
UC SANTA BARBARA	11/22/15	79-51	W	27-47	.574	8-16	.500	17-21	.810	8	32	40	40.7	13	22	27	8	8	79	81.3
CLEMSON	11/24/15	69-56	W	24-49	.490	8-21	.381	13-23	.565	11	18	29	37.8	10	15	16	7	8	69	78.2
NORTH DAKOTA	11/28/15	77-51	W	27-53	.509	6-13	.462	17-22	.773	12	22	34	37.0	19	14	15	8	7	77	78.0
SAN JOSE STATE	11/30/15	104-74	W	43-70	.614	7-16	.438	11-19	.579	13	34	47	38.7	15	23	20	4	8	104	82.3
UTAH VALLEY	12/5/15	79-68	W	33-66	.500	7-23	.304	6-10	.600	13	26	39	38.7	17	21	11	6	7	79	81.9
PORTLAND	12/12/15	93-52	W	35-62	.565	13-19	.684	10-15	.667	11	25	36	38.4	12	20	11	4	13	93	83.2
UC RIVERSIDE	12/15/15	95-81	W	38-85	.447	9-26	.346	10-19	.526	30	25	55	40.2	13	21	9	4	3	95	84.6
PORTLAND STATE	12/17/15	122-59	W	48-81	.593	15-26	.577	11-19	.579	9	40	49	41.1	19	28	15	11	22	122	88.3
SEATTLE U	12/28/15	82-62	W	34-72	.472	7-25	.280	7-14	.500	22	26	48	41.7	19	26	9	3	6	82	87.7
at UCLA	01/02/16	69-80	L	26-59	.441	3-11	.273	14-21	.667	10	25	35	41.2	16	14	17	1	9	69	86.2
at USC	1/4/16	67-74	L	23-55	.418	5-11	.455	16-19	.842	11	25	36	40.8	17	9	21	1	3	67	84.7
at Oregon State	1/8/16	33-60	L	14-65	.215	1-18	.056	4-10	.400	13	25	38	40.6	18	4	10	1	8	33	81.0
OREGON STATE	1/10/16	45-59	L	18-51	.353	1-4	.250	8-14	.571	9	18	27	39.7	20	7	13	2	11	45	78.6
Oregon		1179		452-938	.482	112-283	.396	163-253	.644	199	396	595	39.7	239	269	226	71	125	1179	78.6
Opponents		955		360-899	.400	73-228	.320	162-238	.681	162	318	480	32.0	267	183	236	56	113	955	63.7

Games played: 15
Points/game: 78.6
FG Pct: 48.2
3FG Pct: 39.6
FT Pct: 64.4

Rebounds/game: 39.7
Assists/game: 17.9
Turnovers/game: 15.1
Assist/turnover ratio: 1.2
Steals/game: 8.3
Blocks/game: 4.7

2015-16 OPPONENT STATS

OPPONENT STATISTICS

Opponent	Date	Score		Total		3-Pointers		Free throws		Rebounds				pf	a	t/o	blk	stl	pts	avg
				fg-fga	pct	3fg-fga	pct	ft-fa	pct	off	def	tot	avg							
at North Carolina	11/15/15	79-77	W	28-68	.412	6-23	.261	15-21	.714	17	17	34	34.0	16	8	9	2	9	77	77.0
HAMPTON	11/19/15	86-51	W	20-61	.328	5-17	.294	6-10	.600	10	16	26	30.0	18	8	15	4	4	51	64.0
UC SANTA BARBARA	11/22/15	79-51	W	18-58	.310	5-16	.313	10-17	.588	11	13	24	28.0	20	11	21	1	18	51	59.7
CLEMSON	11/24/15	69-56	W	24-55	.436	1-6	.167	7-11	.636	13	18	31	28.8	21	10	18	5	4	56	58.8
NORTH DAKOTA	11/28/15	77-51	W	17-50	.340	2-9	.222	15-21	.714	10	13	23	27.6	23	8	17	6	10	51	57.2
SAN JOSE STATE	11/30/15	104-74	W	26-69	.377	7-26	.269	15-18	.833	5	16	21	26.5	19	18	11	2	12	74	60.0
UTAH VALLEY	12/5/15	79-68	W	27-61	.443	3-12	.250	11-18	.611	10	20	30	27.0	15	9	12	3	6	68	61.1
PORTLAND	12/12/15	93-52	W	22-55	.400	2-13	.154	6-10	.600	10	17	27	27.0	15	10	19	2	3	52	60.0
UC RIVERSIDE	12/15/15	95-81	W	32-65	.492	9-20	.450	8-11	.727	10	21	31	27.4	15	20	14	6	4	81	62.3
PORTLAND STATE	12/17/15	122-59	W	22-74	.297	8-19	.421	7-14	.500	16	28	44	29.1	17	7	28	3	9	59	62.0
SEATTLE U	12/28/15	82-62	W	23-58	.397	8-20	.400	8-15	.533	12	20	32	29.4	15	17	12	1	4	62	62.0
at UCLA	01/02/16	69-80	L	30-72	.417	8-15	.533	12-16	.750	18	27	45	30.7	22	17	16	5	10	80	63.5
at USC	1/4/16	67-74	L	27-55	.491	2-10	.200	18-24	.750	5	23	28	30.5	20	10	12	4	10	74	64.3
at Oregon State	1/8/16	33-60	L	22-52	.423	3-12	.250	13-16	.813	7	42	49	31.8	16	15	14	7	6	60	64.0
OREGON STATE	1/10/16	45-59	L	22-46	.478	4-10	.400	11-16	.688	8	27	35	32.0	15	15	18	5	4	59	63.7
Opponents		955		360-899	.400	73-228	.320	162-238	.681	162	318	480	32.0	267	183	236	56	113	955	63.7
Oregon		1179		452-938	.482	112-283	.396	163-253	.644	199	396	595	39.7	239	269	226	71	125	1179	78.6

Games played: 15

Points/game: 63.7

FG Pct: 40.0

3FG Pct: 32.0

FT Pct: 68.1

Rebounds/game: 32.0

Assists/game: 12.2

Turnovers/game: 15.7

Assist/turnover ratio: 0.8

Steals/game: 7.5

Blocks/game: 3.7

2015-16 INDIVIDUAL GAME-BY-GAME STATS

#04 Cazorla, Maite

Opponent	Date	gs	min	Total		3-Pointers		Free throws		Rebounds				pf	a	t/o	blk	stl	pts	avg	
				fg-fga	pct	3fg-fga	pct	ft-fga	pct	off	def	tot	avg								
at North Carolina	11/15/15	*	39	4-9	.444	1-6	.167	0-0	.000	0	2	2	2.0	2	9	2	0	4	9	9.0	
HAMPTON	11/19/15	*	29	4-9	.444	2-5	.400	0-0	.000	1	2	3	2.5	0	5	1	1	2	10	9.5	
UC SANTA BARBARA	11/22/15	*	26	3-3	1.000	2-2	1.000	0-0	.000	0	4	4	3.0	3	10	5	0	1	8	9.0	
CLEMSON	11/24/15	*	37	1-5	.200	1-4	.250	2-2	1.000	0	0	0	2.3	0	5	2	1	3	5	8.0	
NORTH DAKOTA	11/28/15	*	20	2-3	.667	0-1	.000	0-0	.000	1	0	1	2.0	2	4	0	0	2	4	7.2	
SAN JOSE STATE	11/30/15	*	27	2-4	.500	1-2	.500	1-2	.500	0	2	2	2.0	1	5	2	0	0	6	7.0	
UTAH VALLEY	12/5/15	*	38	5-14	.357	2-7	.286	4-6	.667	0	3	3	2.1	1	8	2	0	4	16	8.3	
PORTLAND	12/12/15	*	30	6-9	.667	4-5	.800	2-2	1.000	0	3	3	2.3	0	6	3	0	3	18	9.5	
UC RIVERSIDE	12/15/15	*	34	6-14	.429	2-6	.333	1-2	.500	3	3	6	2.7	2	7	0	0	0	15	10.1	
PORTLAND STATE	12/17/15	*	25	7-8	.875	1-1	1.000	1-2	.500	0	3	3	2.7	2	12	0	0	7	16	10.7	
SEATTLE U	12/28/15	*	31	0-5	.000	0-3	.000	0-2	.000	1	2	3	2.7	1	12	2	0	1	0	9.7	
at UCLA	01/02/16	*	38	3-11	.273	1-4	.250	0-0	.000	0	1	1	2.6	4	7	5	0	2	7	9.5	
at USC	1/4/16	*	35	2-9	.222	2-4	.500	1-2	.500	0	2	2	2.5	3	3	5	0	1	7	9.3	
at Oregon State	1/8/16	*	31	1-6	.167	1-3	.333	0-0	.000	0	1	1	2.4	3	3	5	0	2	3	8.9	
OREGON STATE	1/10/16	*	39	6-11	.545	0-1	.000	0-0	.000	1	1	2	2.4	2	2	5	0	3	12	9.1	
Totals			15	479	52-120	.433	20-54	.370	12-20	.600	7	29	36	2.4	26	98	39	2	35	136	9.1

Games played: 15
 Minutes/game: 31.9
 Points/game: 9.1
 FG Pct: 43.3
 3FG Pct: 37.0
 FT Pct: 60.0

Rebounds/game: 2.4
 Assists/game: 6.5
 Turnovers/game: 2.6
 Assist/turnover ratio: 2.5
 Steals/game: 2.3
 Blocks/game: 0.1

#05 Loera, Jordan

Opponent	Date	gs	min	Total		3-Pointers		Free throws		Rebounds				pf	a	t/o	blk	stl	pts	avg
				fg-fga	pct	3fg-fga	pct	ft-fga	pct	off	def	tot	avg							
at North Carolina	11/15/15		6	1-2	.500	0-1	.000	0-0	.000	0	2	2	2.0	0	1	2	0	0	2	2.0
HAMPTON	11/19/15		10	0-2	.000	0-2	.000	0-0	.000	1	1	2	2.0	0	1	0	0	1	0	1.0
UC SANTA BARBARA	11/22/15		12	1-3	.333	1-3	.333	0-0	.000	0	1	1	1.7	0	2	1	0	2	3	1.7
CLEMSON	11/24/15		3	0-0	.000	0-0	.000	0-0	.000	0	0	0	1.3	0	0	0	0	0	0	1.3
NORTH DAKOTA	11/28/15		11	0-3	.000	0-2	.000	4-4	1.000	0	3	3	1.6	2	1	1	0	0	4	1.8
SAN JOSE STATE	11/30/15		5	0-0	.000	0-0	.000	0-0	.000	0	0	0	1.3	0	0	0	0	0	0	1.5
UTAH VALLEY	12/5/15		18	3-4	.750	3-4	.750	0-0	.000	0	0	0	1.1	1	3	0	0	2	9	2.6
PORTLAND	12/12/15		11	1-4	.250	0-1	.000	0-0	.000	0	0	0	1.0	1	0	0	0	0	2	2.5
UC RIVERSIDE	12/15/15		6	0-1	.000	0-1	.000	0-0	.000	0	0	0	0.9	2	0	2	0	0	0	2.2
PORTLAND STATE	12/17/15		15	2-2	1.000	2-2	1.000	0-0	.000	1	0	1	0.9	3	4	3	0	2	6	2.6
SEATTLE U	12/28/15		17	1-2	.500	1-2	.500	0-0	.000	1	1	2	1.0	1	2	1	0	1	3	2.6
at UCLA	01/02/16		11	1-1	1.000	1-1	1.000	2-2	1.000	0	1	1	1.0	0	1	0	0	1	5	2.8
at USC	1/4/16		11	0-0	.000	0-0	.000	0-0	.000	0	0	0	0.9	1	1	0	0	0	0	2.6
at Oregon State	1/8/16		7	0-3	.000	0-1	.000	0-0	.000	0	0	0	0.9	0	0	0	0	0	0	2.4
OREGON STATE	1/10/16		0	0-0	.000	0-0	.000	0-0	.000	0	0	0	0.8	0	0	0	0	0	0	2.3
Totals		0	143	10-27	.370	8-20	.400	6-6	1.000	3	9	12	0.8	11	16	10	0	9	34	2.3

Games played: 15
 Minutes/game: 9.5
 Points/game: 2.3
 FG Pct: 37.0
 3FG Pct: 40.0
 FT Pct: 100.0

Rebounds/game: 0.8
 Assists/game: 1.1
 Turnovers/game: 0.7
 Assist/turnover ratio: 1.6
 Steals/game: 0.6

2015-16 INDIVIDUAL GAME-BY-GAME STATS

#10 Bando, Lexi

Opponent	Date	gs	min	Total		3-Pointers		Free throws		Rebounds				pf	a	t/o	blk	stl	pts	avg	
				fg-fga	pct	3fg-fga	pct	ft-fa	pct	off	def	tot	avg								
at North Carolina	11/15/15	*	40	6-10	.600	4-8	.500	2-2	1.000	0	3	3	3.0	2	0	3	0	0	18	18.0	
HAMPTON	11/19/15	*	27	2-6	.333	2-5	.400	2-2	1.000	0	5	5	4.0	3	3	3	0	1	8	13.0	
UC SANTA BARBARA	11/22/15	*	26	1-8	.125	0-3	.000	4-4	1.000	1	0	1	3.0	1	1	0	0	2	6	10.7	
CLEMSON	11/24/15	*	33	4-8	.500	3-6	.500	2-4	.500	1	1	2	2.8	2	2	4	0	0	13	11.3	
NORTH DAKOTA	11/28/15	*	29	5-11	.455	2-3	.667	2-2	1.000	1	2	3	2.8	1	1	0	1	0	14	11.8	
SAN JOSE STATE	11/30/15	*	31	12-17	.706	6-7	.857	5-5	1.000	0	1	1	2.5	2	4	2	0	3	35	15.7	
UTAH VALLEY	12/5/15	*	16	1-7	.143	0-4	.000	0-0	.000	0	2	2	2.4	3	2	0	0	0	2	13.7	
PORTLAND	12/12/15	*	20	4-7	.571	3-4	.750	0-2	.000	0	1	1	2.3	0	3	2	0	0	11	13.4	
UC RIVERSIDE	12/15/15	*	32	6-14	.429	5-9	.556	0-0	.000	0	3	3	2.3	2	2	2	0	1	17	13.8	
PORTLAND STATE	12/17/15	*	19	3-9	.333	1-4	.250	1-1	1.000	0	1	1	2.2	1	0	1	0	2	8	13.2	
SEATTLE U	12/28/15	*	23	2-8	.250	1-5	.200	3-4	.750	2	2	4	2.4	3	1	0	0	0	8	12.7	
at UCLA	01/02/16	*	33	3-6	.500	1-3	.333	2-2	1.000	1	1	2	2.3	3	1	1	0	1	9	12.4	
at USC	1/4/16	*	29	0-3	.000	0-0	.000	2-2	1.000	0	1	1	2.2	3	1	1	0	0	2	11.6	
at Oregon State	1/8/16	*	25	0-5	.000	0-4	.000	0-0	.000	0	3	3	2.3	3	0	2	0	2	0	10.8	
OREGON STATE	1/10/16	*	20	0-3	.000	0-1	.000	0-0	.000	0	1	1	2.2	2	0	0	1	1	0	10.1	
Totals			15	403	49-122	.402	28-66	.424	25-30	.833	6	27	33	2.2	31	21	21	2	13	151	10.1

Games played: 15
Minutes/game: 26.9
Points/game: 10.1
FG Pct: 40.2
3FG Pct: 42.4
FT Pct: 83.3

Rebounds/game: 2.2
Assists/game: 1.4
Turnovers/game: 1.4
Assist/turnover ratio: 1.0
Steals/game: 0.9
Blocks/game: 0.1

#11 Brenner, Liz

Opponent	Date	gs	min	Total		3-Pointers		Free throws		Rebounds				pf	a	t/o	blk	stl	pts	avg
				fg-fga	pct	3fg-fga	pct	ft-fa	pct	off	def	tot	avg							
at North Carolina	11/15/15		9	1-1	1.000	0-0	.000	0-0	.000	0	0	0	0.0	1	0	0	0	0	2	2.0
HAMPTON	11/19/15		11	3-4	.750	0-0	.000	1-2	.500	1	2	3	1.5	1	1	0	0	1	7	4.5
UC SANTA BARBARA	11/22/15		10	1-2	.500	0-0	.000	2-2	1.000	1	2	3	2.0	0	1	3	1	0	4	4.3
CLEMSON	11/24/15		8	0-2	.000	0-0	.000	1-4	.250	0	0	0	1.5	0	0	1	0	1	1	3.5
NORTH DAKOTA	11/28/15		12	1-3	.333	0-0	.000	2-2	1.000	1	0	1	1.4	3	2	1	2	0	4	3.6
SAN JOSE STATE	11/30/15		18	5-6	.833	0-0	.000	1-1	1.000	1	4	5	2.0	1	0	2	1	0	11	4.8
UTAH VALLEY	12/5/15		20	5-7	.714	0-0	.000	1-1	1.000	2	3	5	2.4	2	1	0	1	0	11	5.7
PORTLAND	12/12/15		15	0-4	.000	0-0	.000	2-2	1.000	3	0	3	2.5	2	1	1	0	3	2	5.3
UC RIVERSIDE	12/15/15		15	3-6	.500	0-0	.000	1-2	.500	4	1	5	2.8	3	2	1	0	0	7	5.4
PORTLAND STATE	12/17/15		14	2-4	.500	0-0	.000	0-0	.000	0	1	1	2.6	0	1	3	0	1	4	5.3
SEATTLE U	12/28/15		13	3-4	.750	0-0	.000	1-2	.500	1	3	4	2.7	1	1	1	0	1	7	5.5
at UCLA	01/02/16		9	1-2	.500	0-0	.000	0-0	.000	0	0	0	2.5	1	0	4	0	0	2	5.2
at USC	1/4/16		7	1-4	.250	0-0	.000	2-3	.667	1	1	2	2.5	1	0	1	0	0	4	5.1
at Oregon State	1/8/16		9	2-3	.667	0-0	.000	0-1	.000	3	3	6	2.7	0	0	0	0	1	4	5.0
OREGON STATE	1/10/16		20	5-8	.625	0-0	.000	3-4	.750	0	2	2	2.7	1	0	0	0	0	13	5.5
Totals		0	190	33-60	.550	0-0	.000	17-26	.654	18	22	40	2.7	17	10	18	5	8	83	5.5

Games played: 15
Minutes/game: 12.7
Points/game: 5.5
FG Pct: 55.0
FT Pct: 65.4

Rebounds/game: 2.7
Assists/game: 0.7
Turnovers/game: 1.2
Assist/turnover ratio: 0.6
Steals/game: 0.5
Blocks/game: 0.3

2015-16 INDIVIDUAL GAME-BY-GAME STATS

#13 Moore, Mar'Shay

Opponent	Date	gs	min	Total		3-Pointers		Free throws		Rebounds				pf	a	t/o	blk	stl	pts	avg
				fg-fga	pct	3fg-fga	pct	ft-fa	pct	off	def	tot	avg							
HAMPTON	11/19/15		12	1-4	.250	1-2	.500	2-2	1.000	1	0	1	1.0	1	0	3	0	0	5	5.0
UC SANTA BARBARA	11/22/15		8	2-3	.667	0-1	.000	0-0	.000	0	0	0	0.5	2	0	0	1	0	4	4.5
CLEMSON	11/24/15		2	0-1	.000	0-1	.000	0-0	.000	0	0	0	0.3	0	0	0	1	0	0	3.0
NORTH DAKOTA	11/28/15		11	1-3	.333	0-1	.000	1-1	1.000	0	1	1	0.5	0	0	2	0	0	3	3.0
SAN JOSE STATE	11/30/15		7	0-0	.000	0-0	.000	0-0	.000	0	0	0	0.4	1	0	0	0	1	0	2.4
UTAH VALLEY	12/5/15		6	1-1	1.000	1-1	1.000	0-0	.000	0	1	1	0.5	2	0	1	0	0	3	2.5
PORTLAND	12/12/15		9	2-3	.667	0-0	.000	0-0	.000	1	0	1	0.6	3	1	1	1	0	4	2.7
UC RIVERSIDE	12/15/15		7	0-3	.000	0-1	.000	0-0	.000	0	1	1	0.6	1	1	0	0	1	0	2.4
PORTLAND STATE	12/17/15		13	4-6	.667	2-2	1.000	3-5	.600	0	3	3	0.9	3	2	2	0	3	13	3.6
SEATTLE U	12/28/15		5	0-0	.000	0-0	.000	0-0	.000	0	0	0	0.8	1	0	0	0	0	0	3.2
at UCLA	01/02/16		2	0-0	.000	0-0	.000	0-0	.000	0	0	0	0.7	0	0	0	0	0	0	2.9
at Oregon State	1/8/16		18	0-5	.000	0-2	.000	1-2	.500	1	1	2	0.8	0	1	0	0	1	1	2.8
OREGON STATE	1/10/16		18	2-5	.400	1-2	.500	2-2	1.000	0	0	0	0.8	1	0	1	0	2	7	3.1
Totals		0	118	13-34	.382	5-13	.385	9-12	.750	3	7	10	0.8	15	5	10	3	8	40	3.1

Games played: 13
Minutes/game: 9.1
Points/game: 3.1
FG Pct: 38.2
3FG Pct: 38.5
FT Pct: 75.0

Rebounds/game: 0.8
Assists/game: 0.4
Turnovers/game: 0.8
Assist/turnover ratio: 0.5
Steals/game: 0.6
Blocks/game: 0.2

#14 Alleyne, Jillian

Opponent	Date	gs	min	Total		3-Pointers		Free throws		Rebounds				pf	a	t/o	blk	stl	pts	avg
				fg-fga	pct	3fg-fga	pct	ft-fa	pct	off	def	tot	avg							
at North Carolina	11/15/15	*	30	4-8	.500	0-0	.000	4-8	.500	6	7	13	13.0	4	5	3	2	1	12	12.0
HAMPTON	11/19/15	*	20	6-8	.750	0-0	.000	2-4	.500	3	7	10	11.5	0	5	2	1	1	14	13.0
UC SANTA BARBARA	11/22/15	*	26	3-6	.500	0-0	.000	9-12	.750	3	10	13	12.0	2	3	5	1	2	15	13.7
CLEMSON	11/24/15	*	32	7-11	.636	0-0	.000	4-6	.667	5	7	12	12.0	3	4	4	1	3	18	14.8
NORTH DAKOTA	11/28/15	*	32	6-10	.600	0-0	.000	5-8	.625	3	8	11	11.8	2	2	2	2	2	17	15.2
SAN JOSE STATE	11/30/15	*	29	12-17	.706	0-0	.000	2-6	.333	10	10	20	13.2	0	4	1	1	2	26	17.0
UTAH VALLEY	12/5/15	*	35	11-15	.733	0-0	.000	0-1	.000	8	11	19	14.0	0	3	3	3	0	22	17.7
PORTLAND	12/12/15	*	28	6-8	.750	0-0	.000	3-4	.750	3	8	11	13.6	2	1	2	1	2	15	17.4
UC RIVERSIDE	12/15/15	*	31	10-15	.667	0-0	.000	5-8	.625	8	9	17	14.0	3	0	2	0	0	25	18.2
PORTLAND STATE	12/17/15	*	24	9-11	.818	0-0	.000	3-4	.750	1	11	12	13.8	1	1	0	2	1	21	18.5
SEATTLE U	12/28/15	*	29	11-15	.733	0-0	.000	1-2	.500	7	7	14	13.8	2	0	0	1	0	23	18.9
at UCLA	01/02/16	*	38	8-18	.444	0-0	.000	9-15	.600	4	12	16	14.0	2	0	3	0	4	25	19.4
at USC	1/4/16	*	37	10-21	.476	0-0	.000	3-4	.750	6	11	17	14.2	4	0	4	0	1	23	19.7
at Oregon State	1/8/16	*	30	4-16	.250	0-0	.000	2-4	.500	3	3	6	13.6	1	0	0	0	0	10	19.0
OREGON STATE	1/10/16	*	32	2-10	.200	0-0	.000	2-4	.500	2	8	10	13.4	5	2	4	1	3	6	18.1
Totals		15	453	109-189	.577	0-0	.000	54-90	.600	72	129	201	13.4	31	30	35	16	22	272	18.1

Games played: 15
Minutes/game: 30.2
Points/game: 18.1
FG Pct: 57.7
FT Pct: 60.0

Rebounds/game: 13.4
Assists/game: 2.0
Turnovers/game: 2.3
Assist/turnover ratio: 0.9
Steals/game: 1.5
Blocks/game: 1.1

2015-16 INDIVIDUAL GAME-BY-GAME STATS

#15 Vandenberg, Jacinta

Opponent	Date	gs	min	Total		3-Pointers		Free throws		Rebounds				pf	a	t/o	blk	stl	pts	avg	
				fg-fga	pct	3fg-fga	pct	ft-fa	pct	off	def	tot	avg								
at North Carolina	11/15/15	*	20	3-8	.375	0-0	.000	0-0	.000	0	5	5	5.0	4	2	2	1	0	6	6.0	
HAMPTON	11/19/15	*	21	6-12	.500	0-0	.000	0-0	.000	2	3	5	5.0	1	5	2	3	0	12	9.0	
UC SANTA BARBARA	11/22/15	*	30	7-9	.778	0-0	.000	0-0	.000	1	7	8	6.0	1	2	1	3	1	14	10.7	
CLEMSON	11/24/15	*	28	2-6	.333	0-0	.000	0-2	.000	4	4	8	6.5	4	3	5	3	0	4	9.0	
NORTH DAKOTA	11/28/15	*	17	2-4	.500	0-0	.000	0-0	.000	0	1	1	5.4	2	0	2	2	0	4	8.0	
SAN JOSE STATE	11/30/15	*	21	4-7	.571	0-0	.000	0-0	.000	0	6	6	5.5	2	3	4	2	0	8	8.0	
UTAH VALLEY	12/5/15	*	17	1-4	.250	0-0	.000	0-0	.000	0	4	4	5.3	4	1	2	2	1	2	7.1	
PORTLAND	12/12/15	*	23	3-5	.600	0-0	.000	0-0	.000	0	2	2	4.9	2	3	1	0	0	6	7.0	
UC RIVERSIDE	12/15/15	*	25	4-9	.444	0-0	.000	3-7	.429	4	4	8	5.2	0	4	0	2	0	11	7.4	
PORTLAND STATE	12/17/15	*	11	2-4	.500	0-0	.000	0-0	.000	0	4	4	5.1	3	1	0	1	1	4	7.1	
SEATTLE U	12/28/15	*	24	4-8	.500	0-0	.000	1-2	.500	1	7	8	5.4	4	4	2	2	3	9	7.3	
at UCLA	01/02/16	*	29	6-8	.750	0-0	.000	0-0	.000	3	5	8	5.6	5	1	1	1	0	12	7.7	
at USC	1/4/16	*	28	1-2	.500	0-0	.000	0-0	.000	0	4	4	5.5	1	1	1	1	1	2	7.2	
at Oregon State	1/8/16	*	24	4-7	.571	0-0	.000	1-2	.500	1	6	7	5.6	4	0	2	1	0	9	7.4	
OREGON STATE	1/10/16	*	20	1-5	.200	0-0	.000	0-2	.000	1	4	5	5.5	4	1	1	0	0	2	7.0	
Totals			15	338	50-98	.510	0-0	.000	5-15	.333	17	66	83	5.5	41	31	26	24	7	105	7.0

Games played: 15
 Minutes/game: 22.5
 Points/game: 7.0
 FG Pct: 51.0
 FT Pct: 33.3

Rebounds/game: 5.5
 Assists/game: 2.1
 Turnovers/game: 1.7
 Assist/turnover ratio: 1.2
 Steals/game: 0.5
 Blocks/game: 1.6

#22 Yearwood, Lauren

Opponent	Date	gs	min	Total		3-Pointers		Free throws		Rebounds				pf	a	t/o	blk	stl	pts	avg
				fg-fga	pct	3fg-fga	pct	ft-fga	pct	off	def	tot	avg							
at North Carolina	11/15/15		2	0-0	.000	0-0	.000	0-0	.000	0	1	1	1.0	0	0	1	0	0	0	0.0
HAMPTON	11/19/15		9	1-1	1.000	0-0	.000	0-0	.000	3	3	6	3.5	1	1	2	1	0	2	1.0
UC SANTA BARBARA	11/22/15		5	0-1	.000	0-0	.000	0-0	.000	0	0	0	2.3	0	2	1	0	0	0	0.7
CLEMSON	11/24/15		1	0-0	.000	0-0	.000	0-0	.000	0	0	0	1.8	0	0	0	0	0	0	0.5
NORTH DAKOTA	11/28/15		8	0-0	.000	0-0	.000	0-0	.000	0	4	4	2.2	2	0	1	0	0	0	0.4
SAN JOSE STATE	11/30/15		6	2-2	1.000	0-0	.000	0-2	.000	0	1	1	2.0	0	1	1	0	0	4	1.0
UTAH VALLEY	12/5/15		2	0-0	.000	0-0	.000	0-0	.000	0	0	0	1.7	0	0	0	0	0	0	0.9
PORTLAND	12/12/15		6	0-1	.000	0-0	.000	0-0	.000	0	0	0	1.5	0	0	0	0	1	0	0.8
PORTLAND STATE	12/17/15		19	4-7	.571	0-0	.000	2-5	.400	3	5	8	2.2	1	1	2	2	0	10	1.8
SEATTLE U	12/28/15		8	2-5	.400	0-0	.000	0-0	.000	3	2	5	2.5	0	0	0	0	0	4	2.0
at Oregon State	1/8/16		10	1-2	.500	0-0	.000	0-0	.000	1	0	1	2.4	1	0	0	0	2	2	2.0
Totals		0	76	10-19	.526	0-0	.000	2-7	.286	10	16	26	2.4	5	5	8	3	3	22	2.0

Games played: 11
 Minutes/game: 6.9
 Points/game: 2.0
 FG Pct: 52.6
 FT Pct: 28.6

Rebounds/game: 2.4
 Assists/game: 0.5
 Turnovers/game: 0.7
 Assist/turnover ratio: 0.6
 Steals/game: 0.3
 Blocks/game: 0.3

2015-16 INDIVIDUAL GAME-BY-GAME STATS

#32 Gildon, Oti

Opponent	Date	gs	min	Total		3-Pointers		Free throws		Rebounds				pf	a	t/o	blk	stl	pts	avg
				fg-fga	pct	3fg-fga	pct	ft-fa	pct	off	def	tot	avg							
at North Carolina	11/15/15		7	1-2	.500	1-1	1.000	0-0	.000	1	0	1	1.0	1	0	0	0	0	3	3.0
HAMPTON	11/19/15		17	3-5	.600	0-2	.000	3-3	1.000	1	4	5	3.0	1	1	0	0	1	9	6.0
UC SANTA BARBARA	11/22/15		11	2-2	1.000	2-2	1.000	0-0	.000	0	0	0	2.0	3	0	4	0	0	6	6.0
CLEMSON	11/24/15		6	1-1	1.000	0-0	.000	1-2	.500	0	1	1	1.8	0	0	0	0	0	3	5.3
NORTH DAKOTA	11/28/15		14	1-3	.333	0-0	.000	0-0	.000	1	0	1	1.6	1	0	1	0	0	2	4.6
SAN JOSE STATE	11/30/15		11	0-2	.000	0-1	.000	0-0	.000	0	4	4	2.0	1	0	3	0	0	0	3.8
UTAH VALLEY	12/5/15		5	0-0	.000	0-0	.000	1-2	.500	0	0	0	1.7	2	0	0	0	0	1	3.4
PORTLAND	12/12/15		12	3-4	.750	0-0	.000	0-0	.000	1	3	4	2.0	0	0	1	0	1	6	3.8
UC RIVERSIDE	12/15/15		8	2-5	.400	0-2	.000	0-0	.000	2	0	2	2.0	0	0	0	0	0	4	3.8
PORTLAND STATE	12/17/15		20	1-5	.200	1-1	1.000	0-0	.000	1	5	6	2.4	3	2	1	4	1	3	3.7
SEATTLE U	12/28/15		8	1-3	.333	0-1	.000	0-0	.000	0	0	0	2.2	2	0	1	0	0	2	3.5
at UCLA	01/02/16		0	0-0	.000	0-0	.000	0-0	.000	0	0	0	2.0	0	0	0	0	0	0	3.3
at USC	1/4/16		5	2-2	1.000	1-1	1.000	2-2	1.000	0	0	0	1.8	0	0	1	0	0	7	3.5
at Oregon State	1/8/16		16	1-5	.200	0-3	.000	0-1	.000	1	1	2	1.9	3	0	0	0	0	2	3.4
OREGON STATE	1/10/16		12	0-1	.000	0-0	.000	1-2	.500	2	1	3	1.9	0	0	0	0	0	1	3.3
Totals		0	152	18-40	.450	5-14	.357	8-12	.667	10	19	29	1.9	17	3	12	4	3	49	3.3

Games played: 15
Minutes/game: 10.1
Points/game: 3.3
FG Pct: 45.0
3FG Pct: 35.7
FT Pct: 66.7

Rebounds/game: 1.9
Assists/game: 0.2
Turnovers/game: 0.8
Assist/turnover ratio: 0.3
Steals/game: 0.2
Blocks/game: 0.3

#33 Petersen, Lexi

Opponent	Date	gs	min	Total		3-Pointers		Free throws		Rebounds				pf	a	t/o	blk	stl	pts	avg
				fg-fga	pct	3fg-fga	pct	ft-fa	pct	off	def	tot	avg							
at North Carolina	11/15/15	*	26	5-8	.625	4-7	.571	0-0	.000	1	2	3	3.0	4	2	3	1	0	14	14.0
HAMPTON	11/19/15	*	25	1-5	.200	0-4	.000	1-2	.500	2	0	2	2.5	2	0	3	1	0	3	8.5
UC SANTA BARBARA	11/22/15	*	35	6-9	.667	2-4	.500	0-0	.000	0	4	4	3.0	1	1	7	2	0	14	10.3
CLEMSON	11/24/15	*	37	8-12	.667	3-7	.429	1-1	1.000	1	1	2	2.8	1	0	0	1	0	20	12.8
NORTH DAKOTA	11/28/15	*	32	5-9	.556	2-4	.500	1-2	.500	1	1	2	2.6	1	3	0	1	3	13	12.8
SAN JOSE STATE	11/30/15	*	35	5-10	.500	0-3	.000	2-3	.667	1	3	4	2.8	3	6	2	0	2	12	12.7
UTAH VALLEY	12/5/15	*	37	6-11	.545	1-4	.250	0-0	.000	3	0	3	2.9	2	3	3	0	0	13	12.7
PORTLAND	12/12/15	*	29	8-13	.615	4-5	.800	3-5	.600	2	3	5	3.1	1	2	0	2	3	23	14.0
UC RIVERSIDE	12/15/15	*	32	5-13	.385	0-2	.000	0-0	.000	2	2	4	3.2	0	5	1	2	1	10	13.6
PORTLAND STATE	12/17/15	*	23	9-16	.563	3-9	.333	1-2	.500	1	2	3	3.2	2	4	2	1	4	22	14.4
SEATTLE U	12/28/15	*	30	9-16	.563	4-8	.500	1-2	.500	3	1	4	3.3	2	6	1	0	0	23	15.2
at UCLA	01/02/16	*	37	4-12	.333	0-3	.000	1-2	.500	0	4	4	3.3	0	4	3	0	1	9	14.7
at USC	1/4/16	*	36	7-11	.636	2-3	.667	6-6	1.000	0	3	3	3.3	2	1	6	0	0	22	15.2
at Oregon State	1/8/16	*	25	1-10	.100	0-2	.000	0-0	.000	0	1	1	3.1	3	0	1	0	0	2	14.3
OREGON STATE	1/10/16	*	34	2-8	.250	0-0	.000	0-0	.000	0	0	0	2.9	4	2	2	0	2	4	13.6
Totals		15	473	81-163	.497	25-65	.385	17-25	.680	17	27	44	2.9	28	39	34	11	16	204	13.6

Games played: 15
Minutes/game: 31.5
Points/game: 13.6
FG Pct: 49.7
3FG Pct: 38.5
FT Pct: 68.0

Rebounds/game: 2.9
Assists/game: 2.6
Turnovers/game: 2.3
Assist/turnover ratio: 1.1
Steals/game: 1.1
Blocks/game: 0.7

2015-16 INDIVIDUAL GAME-BY-GAME STATS

#44 Cooper, Kat

Opponent	Date	gs	min	Total		3-Pointers		Free throws		Rebounds				pf	a	t/o	blk	stl	pts	avg
				fg-fga	pct	3fg-fga	pct	ft-fa	pct	off	def	tot	avg							
at North Carolina	11/15/15		21	5-11	.455	3-6	.500	0-0	.000	1	2	3	3.0	2	2	0	0	0	13	13.0
HAMPTON	11/19/15		16	5-7	.714	4-5	.800	2-2	1.000	1	1	2	2.5	0	2	0	0	0	16	14.5
UC SANTA BARBARA	11/22/15		9	1-1	1.000	1-1	1.000	2-3	.667	1	3	4	3.0	0	0	0	0	0	5	11.3
CLEMSON	11/24/15		13	1-3	.333	1-3	.333	2-2	1.000	0	3	3	3.0	0	1	0	0	1	5	9.8
NORTH DAKOTA	11/28/15		12	4-4	1.000	2-2	1.000	2-3	.667	1	1	2	2.8	3	1	4	0	0	12	10.2
SAN JOSE STATE	11/30/15		8	1-5	.200	0-3	.000	0-0	.000	0	1	1	2.5	2	0	2	0	0	2	8.8
UTAH VALLEY	12/5/15		6	0-3	.000	0-3	.000	0-0	.000	0	0	0	2.1	0	0	0	0	0	0	7.6
PORTLAND	12/12/15		14	2-4	.500	2-4	.500	0-0	.000	0	1	1	2.0	1	3	0	0	0	6	7.4
UC RIVERSIDE	12/15/15		10	2-5	.400	2-5	.400	0-0	.000	0	2	2	2.0	0	0	1	0	0	6	7.2
PORTLAND STATE	12/17/15		12	5-7	.714	5-7	.714	0-0	.000	1	1	2	2.0	0	0	0	1	0	15	8.0
SEATTLE U	12/28/15		12	1-6	.167	1-6	.167	0-0	.000	1	1	2	2.0	2	0	1	0	0	3	7.5
at UCLA	01/02/16		3	0-1	.000	0-0	.000	0-0	.000	0	0	0	1.8	1	0	0	0	0	0	6.9
at USC	1/4/16		12	0-3	.000	0-3	.000	0-0	.000	0	0	0	1.7	2	2	0	0	0	0	6.4
at Oregon State	1/8/16		5	0-3	.000	0-3	.000	0-0	.000	0	0	0	1.6	0	0	0	0	0	0	5.9
OREGON STATE	1/10/16		5	0-0	.000	0-0	.000	0-0	.000	0	0	0	1.5	1	0	0	0	0	0	5.5
Totals		0	158	27-63	.429	21-51	.412	8-10	.800	6	16	22	1.5	14	11	8	1	1	83	5.5

Games played: 15
 Minutes/game: 10.5
 Points/game: 5.5
 FG Pct: 42.9
 3FG Pct: 41.2
 FT Pct: 80.0

Rebounds/game: 1.5
 Assists/game: 0.7
 Turnovers/game: 0.5
 Assist/turnover ratio: 1.4
 Steals/game: 0.1
 Blocks/game: 0.1

#51 Gruys, Katie

Opponent	Date	gs	min	Total		3-Pointers		Free throws		Rebounds				pf	a	t/o	blk	stl	pts	avg
				fg-fga	pct	3fg-fga	pct	ft-fa	pct	off	def	tot	avg							
HAMPTON	11/19/15		3	0-1	.000	0-0	.000	0-0	.000	1	0	1	1.0	1	0	0	0	0	0	0.0
UC SANTA BARBARA	11/22/15		2	0-0	.000	0-0	.000	0-0	.000	0	0	0	0.5	0	0	0	0	0	0	0.0
NORTH DAKOTA	11/28/15		2	0-0	.000	0-0	.000	0-0	.000	0	0	0	0.3	0	0	1	0	0	0	0.0
SAN JOSE STATE	11/30/15		2	0-0	.000	0-0	.000	0-0	.000	0	0	0	0.3	1	0	1	0	0	0	0.0
PORTLAND	12/12/15		3	0-0	.000	0-0	.000	0-0	.000	0	1	1	0.4	0	0	0	0	0	0	0.0
PORTLAND STATE	12/17/15		5	0-2	.000	0-0	.000	0-0	.000	0	1	1	0.5	0	0	1	0	0	0	0.0
Totals		0	17	0-3	.000	0-0	.000	0-0	.000	1	2	3	0.5	2	0	3	0	0	0	0.0

Games played: 6
 Minutes/game: 2.8
 FG Pct: 0.0

Rebounds/game: 0.5
 Turnovers/game: 0.5

2015-16 & CAREER SINGLE-GAME HIGHS

JILLIAN ALLEYNE

Stat Category	2015-16 High	Career High
FGs Made	12 vs. San Jose State, 11/30/15	13 vs. Portland State, 11/15/12
FGs Attempted	21 at USC, 1/4/16	24 vs. Portland State, 11/15/12
3FGs Made	-	-
3FGs Attempted	-	1, Three Times
FTs Made	9, Twice - Last at #21 UCLA, 1/2/16	12, Twice - Last vs. Wash, 1/24/14
FTs Attempted	15 at #21 UCLA, 1/2/16	19 vs. Portland State, 11/15/12
Rebounds	20 vs. San Jose State, 11/30/15	27 vs. Port. St., 11/15/12 (<i>UO & P12 rec.</i>)
Points	26 vs. San Jose State, 11/30/15	38 vs. Portland State, 11/15/12
Assists	5, Twice - Last vs. Hampton, 11/19/15	5, 3x - Last vs. Hampton, 11/19/15
Blocks	3 vs. Utah Valley, 12/5/15	6 vs. Seattle U, 12/29/14
Steals	4 at #21 UCLA, 1/2/16	6, Twice - Last vs. UCLA, 2/17/14

LEXI BANDO

Stat Category	2015-16 High	Career High
FGs Made	12 vs. San Jose State, 11/30/15	Same
FGs Attempted	17 vs. San Jose State, 11/30/15	17, Twice
3FGs Made	6 vs. San Jose State, 11/30/15	6, Twice
3FGs Attempted	9 vs. UC Riverside, 12/15/15	9, Twice
FTs Made	5 vs. San Jose State, 11/30/15	Same
FTs Attempted	5 vs. San Jose State, 11/30/15	Same
Rebounds	5 vs. Hampton, 11/19/15	6 at Washington State, 2/6/15
Points	35 vs. San Jose State, 11/30/15	Same
Assists	4 vs. San Jose State, 11/30/15	5, Twice - Last vs. UCLA, 1/31/15
Blocks	1 vs. North Dakota, 11/28/15	1, Three Times
Steals	3 vs. San Jose State, 11/30/15	3, Twice

LIZ BRENNER

Stat Category	2015-16 High	Career High
FGs Made	5, 3x - Last vs. #11 Oregon St., 1/10/16	6, Twice - Last at UCLA, 1/21/12
FGs Attempted	8 vs. #11 Oregon St., 1/10/16	12 at UCLA, 1/21/12
3FGs Made	-	1, Twice - Last at UCLA, 1/17/14
3FGs Attempted	-	2, Twice - Last at USC, 1/19/14
FTs Made	3 vs. #11 Oregon St., 1/10/16	7 vs. Oregon State, 1/15/13
FTs Attempted	4 vs. #11 Oregon St., 1/10/16	10 vs. Oregon State, 1/15/13
Rebounds	5, 3x - Last vs. UC Riverside, 12/15/15	15, Twice - Last vs. Washington, 3/7/13
Points	13 vs. #11 Oregon St., 1/10/16	17 vs. Oregon State, 1/15/13
Assists	2, Twice - Last vs. UC Riverside, 12/15/15	4 vs. Washington, 3/7/13
Blocks	2 vs. North Dakota, 11/28/15	4 vs. Arizona State, 1/14/12
Steals	3 vs. Portland, 12/5/15	3, Four Times

MAITE CAZORLA

Stat Category	2015-16 High	Career High
FGs Made	7 vs. Portland St., 12/17/15	Same
FGs Attempted	14, Twice - Last vs. UC Riverside, 12/15/15	Same
3FGs Made	4 vs. Portland, 12/5/15	Same
3FGs Attempted	7 vs. Utah Valley, 12/5/15	Same
FTs Made	4 vs. Utah Valley, 12/5/15	Same
FTs Attempted	6 vs. Utah Valley, 12/5/15	Same
Rebounds	6 vs. UC Riverside, 12/15/15	Same
Points	18 vs. Portland, 12/5/15	Same
Assists	12, Twice - Last vs. Seattle U, 12/28/15	Same
Blocks	1, Twice - Last vs. Clemson, 11/24/15	Same
Steals	7 vs. Portland St., 12/17/15	Same

KAT COOPER

Stat Category	2015-16 High	Career High
FGs Made	5, 3x - Last vs. Portland St., 12/17/15	Same
FGs Attempted	11 at #22 North Carolina, 11/15/15	Same
3FGs Made	5 vs. Portland St., 12/17/15	Same
3FGs Attempted	7 vs. Portland St., 12/17/15	Same
FTs Made	2, 4x - Last vs. N. Dakota, 11/28/15	Same
FTs Attempted	3, Twice - Last vs. N. Dakota, 11/28/15	Same
Rebounds	4 vs. UCSB, 11/22/15	Same
Points	16 vs. Hampton, 11/19/15	Same
Assists	3 vs. Portland, 12/5/15	Same
Blocks	1 vs. Portland St., 12/17/15	Same
Steals	1 vs. Clemson, 11/24/15	Same

OTI GILDON

Stat Category	2015-16 High	Career High
FGs Made	3, Twice - Last vs. Portland, 12/5/15	Same
FGs Attempted	5, 4x - Last at #11 Oregon St., 1/8/16	Same
3FGs Made	2 vs. UCSB, 11/22/15	Same
3FGs Attempted	3 at #11 Oregon St., 1/8/16	Same
FTs Made	3 vs. Hampton, 11/19/15	Same
FTs Attempted	3 vs. Hampton, 11/19/15	Same
Rebounds	6 vs. Portland St., 12/17/15	Same
Points	9 vs. Hampton, 11/19/15	Same
Assists	2 vs. Portland St., 12/17/15	Same
Blocks	4 vs. Portland St., 12/17/15	Same
Steals	1, 3x - Last vs. Portland St., 12/17/15	Same

KATIE GRUYS

Stat Category	2015-16 High	Career High
FGs Made	-	1, Seven Times
FGs Attempted	2 vs. Portland St., 12/17/15	5 at Illinois, 12/12/12
3FGs Made	-	-
3FGs Attempted	-	2 at Illinois, 12/12/12
FTs Made	-	2, Three Times
FTs Attempted	-	2, Three Times
Rebounds	1, 3x - Last vs. Portland St., 12/17/15	3, Three Times
Points	-	2, 10 Times
Assists	-	1, Twice - Last vs. NAU, 12/13/14
Blocks	-	1, Twice - Last vs. PSU, 11/25/14
Steals	-	1, Three Times

JORDAN LOERA

Stat Category	2015-16 High	Career High
FGs Made	3 vs. Utah Valley, 12/5/15	6, Twice - Last vs. Wash. State, 2/17/13
FGs Attempted	4, Twice - Last vs. Portland, 12/5/15	16 at California, 2/22/13
3FGs Made	3 vs. Utah Valley, 12/5/15	5 vs. UC Irvine, 11/25/11
3FGs Attempted	4 vs. Utah Valley, 12/5/15	12 vs. Saint Mary's, 2/17/13
FTs Made	4 vs. N. Dakota, 11/28/15	6 vs. Washington State, 2/17/13
FTs Attempted	4 vs. N. Dakota, 11/28/15	8 vs. Washington State, 2/17/13
Rebounds	3 vs. N. Dakota, 11/28/15	12 vs. Washington State, 2/17/13
Points	9 vs. Utah Valley, 12/5/15	21 vs. Washington State, 2/17/13
Assists	4 vs. Portland St., 12/17/15	7 vs. Washington, 2/15/13
Blocks	-	2 vs. Arizona, 2/13/15
Steals	2, 3x - Last vs. Portland St., 12/17/15	4, Three Times

MAR'SHAY MOORE

Stat Category	2015-16 High	Career High
FGs Made	4 vs. Portland St., 12/17/15	Same
FGs Attempted	6 vs. Portland St., 12/17/15	Same
3FGs Made	2 vs. Portland St., 12/17/15	Same
3FGs Attempted	2, 3x - Last vs. #11 Oregon St., 1/10/16	Same
FTs Made	3 vs. Portland St., 12/17/15	Same
FTs Attempted	5 vs. Portland St., 12/17/15	Same
Rebounds	3 vs. Portland St., 12/17/15	Same
Points	13 vs. Portland St., 12/17/15	Same
Assists	2 vs. Portland St., 12/17/15	Same
Blocks	1, 3x - Last vs. Portland, 12/5/15	Same
Steals	3 vs. Portland St., 12/17/15	Same

LEXI PETERSEN

Stat Category	2015-16 High	Career High
FGs Made	9, Twice - Last vs. Seattle U, 12/28/15	Same
FGs Attempted	16, Twice - Last vs. Seattle U, 12/28/15	17, Twice - Last vs. #24 Cal, 2/27/15
3FGs Made	4, Three Times - Last vs. Seattle U, 12/28/15	4, Four Times
3FGs Attempted	9 vs. Portland St., 12/17/15	Same
FTs Made	6 at USC, 1/4/16	10 at UCLA, 1/5/15
FTs Attempted	6 at USC, 1/4/16	12, Twice - Last vs. SCU, 12/18/14
Rebounds	5 vs. Portland, 12/5/15	8, Twice - Last at Wash. St., 2/23/14
Points	23, Twice - Last vs. Seattle U, 12/28/15	25 vs. Cal Poly, 12/20/13
Assists	6 vs. Seattle U, 12/28/15	9 at UCLA, 1/5/15
Blocks	2, 3x - Last vs. UC Riverside, 12/15/15	4 vs. Utah State, 11/14/14
Steals	4 vs. Portland St., 12/17/15	5 vs. Portland State, 12/14/13

2015-16 & CAREER SINGLE-GAME HIGHS

JACINTA VANDENBERG

Stat Category	2015-16 High	Career High
FGs Made	7 vs. UCSB, 11/22/15	Same
FGs Attempted	12 vs. Hampton, 11/19/15	Same
3FGs Made	-	Same
3FGs Attempted	-	Same
FTs Made	3 vs. UC Riverside, 12/15/15	Same
FTs Attempted	7 vs. UC Riverside, 12/15/15	Same
Rebounds	8, 4x - Last at #21 UCLA, 1/2/16	Same
Points	14 vs. UCSB, 11/22/15	Same
Assists	5 vs. Hampton, 11/19/15	Same
Blocks	3, 3x - Last vs. Clemson, 11/24/15	Same
Steals	3 vs. Seattle U, 12/28/15	Same

LAUREN YEARWOOD

Stat Category	2015-16 High	Career High
FGs Made	4 vs. Portland St., 12/17/15	Same
FGs Attempted	7 vs. Portland St., 12/17/15	Same
3FGs Made	-	Same
3FGs Attempted	-	Same
FTs Made	2 vs. Portland St., 12/17/15	Same
FTs Attempted	5 vs. Portland St., 12/17/15	Same
Rebounds	8 vs. Portland St., 12/17/15	Same
Points	10 vs. Portland St., 12/17/15	Same
Assists	2 vs. UCSB, 11/22/15	Same
Blocks	2 vs. Portland St., 12/17/15	Same
Steals	2 at #11 Oregon St., 1/8/16	Same

CAREER STATS

Individual Career History

Alleyne, Jillian

			Total		3-Point		F-Throws		Rebounds										Scoring	
Season	gp-gs	min/avg	fg-fga	pct	fg-fga	pct	ft-fta	pct	off	def	tot	avg	pf	fo	ast	to	blk	stl	pts	avg
2012-13	31-26	942/30.4	155-344	.451	0-2	.000	92-171	.538	129	241	370	11.9	86	4	30	89	40	29	402	13.0
2013-14	32-32	988/30.9	247-446	.554	0-0	.000	190-268	.709	216	303	519	16.2	94	1	63	104	36	52	684	21.4
2014-15	30-30	1041/34.7	224-389	.576	1-2	.500	102-181	.564	132	323	455	15.2	84	1	36	88	41	25	551	18.4
2015-16	15-15	453/30.2	109-189	.577	0-0	.000	54-90	.600	72	129	201	13.4	31	1	30	35	16	22	272	18.1
TOTAL	108-103	3424/31.7	735-1368	.537	1-4	.250	438-710	.617	549	996	1545	14.3	295	7	159	316	133	128	1909	17.7

Bando, Lexi

			Total		3-Point		F-Throws		Rebounds												Scoring	
Season	gp-gs	min/avg	fg-fga	pct	fg-fga	pct	ft-fta	pct	off	def	tot	avg	pf	fo	ast	to	blk	stl	pts	avg		
2014-15	28-28	920/32.9	107-275	.389	55-125	.440	23-33	.697	27	46	73	2.6	56	0	56	49	2	18	292	10.4		
2015-16	15-15	403/26.9	49-122	.402	28-66	.424	25-30	.833	6	27	33	2.2	31	0	21	21	2	13	151	10.1		
TOTAL	43-43	1323/30.8	156-397	.393	83-191	.435	48-63	.762	33	73	106	2.5	87	0	77	70	4	31	443	10.3		

Brenner, Liz

			Total		3-Point		F-Throws		Rebounds											Scoring	
Season	gp-gs	min/avg	fg-fga	pct	fg-fga	pct	ft-fta	pct	off	def	tot	avg	pf	fo	ast	to	blk	stl	pts	avg	
2011-12	21-8	499/23.8	37-99	.374	0-7	.000	47-70	.671	45	77	122	5.8	27	0	10	37	9	14	121	5.8	
2012-13	20-18	605/30.3	58-163	.356	1-7	.143	40-68	.588	53	94	147	7.4	39	0	19	49	9	13	157	7.9	
2013-14	8-0	100/12.5	7-24	.292	1-4	.250	10-11	.909	7	10	17	2.1	9	0	3	4	2	1	25	3.1	
2015-16	15-0	190/12.7	33-60	.550	0-0	.000	17-26	.654	18	22	40	2.7	17	0	10	18	5	8	83	5.5	
TOTAL	64-26	1394/21.8	135-346	.390	2-18	.111	114-175	.651	123	203	326	5.1	92	0	42	108	25	36	386	6.0	

Cazorla, Maite

			Total		3-Point		F-Throws		Rebounds											Scoring	
Season	gp-gs	min/avg	fg-fga	pct	fg-fga	pct	ft-fta	pct	off	def	tot	avg	pf	fo	ast	to	blk	stl	pts	avg	
2015-16	15-15	479/31.9	52-120	.433	20-54	.370	12-20	.600	7	29	36	2.4	26	0	98	39	2	35	136	9.1	
TOTAL	15-15	479/31.9	52-120	.433	20-54	.370	12-20	.600	7	29	36	2.4	26	0	98	39	2	35	136	9.1	

Cooper, Kat

			Total		3-Point		F-Throws		Rebounds												Scoring	
Season	gp-gs	min/avg	fg-fga	pct	fg-fga	pct	ft-fta	pct	off	def	tot	avg	pf	fo	ast	to	blk	stl	pts	avg		
2015-16	15-0	158/10.5	27-63	.429	21-51	.412	8-10	.800	6	16	22	1.5	14	0	11	8	1	1	83	5.5		
TOTAL	15-0	158/10.5	27-63	.429	21-51	.412	8-10	.800	6	16	22	1.5	14	0	11	8	1	1	83	5.5		

Gildon, Oti

			Total		3-Point		F-Throws		Rebounds											Scoring	
Season	gp-gs	min/avg	fg-fga	pct	fg-fga	pct	ft-fta	pct	off	def	tot	avg	pf	fo	ast	to	blk	stl	pts	avg	
2015-16	15-0	152/10.1	18-40	.450	5-14	.357	8-12	.667	10	19	29	1.9	17	0	3	12	4	3	49	3.3	
TOTAL	15-0	152/10.1	18-40	.450	5-14	.357	8-12	.667	10	19	29	1.9	17	0	3	12	4	3	49	3.3	

Gruys, Katie

			Total		3-Point		F-Throws		Rebounds										Scoring	
Season	gp-gs	min/avg	fg-fga	pct	fg-fga	pct	ft-fta	pct	off	def	tot	avg	pf	fo	ast	to	blk	stl	pts	avg
2012-13	18-0	44/2.4	2-12	.167	0-3	.000	2-2	1.000	5	0	5	0.3	1	0	0	6	1	2	6	0.3
2013-14	13-0	25/1.9	3-6	.500	0-1	.000	2-2	1.000	1	4	5	0.4	2	0	0	1	0	1	8	0.6
2014-15	19-0	109/5.7	2-9	.222	0-0	.000	2-2	1.000	4	13	17	0.9	17	0	2	8	1	1	6	0.3
2015-16	6-0	17/2.8	0-3	.000	0-0	.000	0-0	.000	1	2	3	0.5	2	0	0	3	0	0	0	0.0
TOTAL	56-0	195/3.5	7-30	.233	0-4	.000	6-6	1.000	11	19	30	0.5	22	0	2	18	2	4	20	0.4

CAREER STATS

Individual Career History

Loera, Jordan

			Total		3-Point		F-Throws		Rebounds											Scoring	
Season	gp-gs	min/avg	fg-fga	pct	fg-fga	pct	ft-fta	pct	off	def	tot	avg	pf	fo	ast	to	blk	stl	pts	avg	
2011-12	31-10	548/17.7	62-175	.354	45-133	.338	10-12	.833	13	49	62	2.0	24	0	20	21	3	29	179	5.8	
2012-13	31-31	965/31.1	75-282	.266	32-153	.209	18-23	.783	47	117	164	5.3	51	0	71	72	6	37	200	6.5	
2014-15	23-2	440/19.1	36-99	.364	24-55	.436	2-5	.400	11	41	52	2.3	24	0	30	22	2	10	98	4.3	
2015-16	15-0	143/9.5	10-27	.370	8-20	.400	6-6	1.000	3	9	12	0.8	11	0	16	10	0	9	34	2.3	
TOTAL	100-43	2096/21.0	183-583	.314	109-361	.302	36-46	.783	74	216	290	2.9	110	0	137	125	11	85	511	5.1	

Moore, Mar'Shay

			Total		3-Point		F-Throws		Rebounds											Scoring	
Season	gp-gs	min/avg	fg-fga	pct	fg-fga	pct	ft-fta	pct	off	def	tot	avg	pf	fo	ast	to	blk	stl	pts	avg	
2015-16	13-0	118/9.1	13-34	.382	5-13	.385	9-12	.750	3	7	10	0.8	15	0	5	10	3	8	40	3.1	
TOTAL	13-0	118/9.1	13-34	.382	5-13	.385	9-12	.750	3	7	10	0.8	15	0	5	10	3	8	40	3.1	

Petersen, Lexi

			Total		3-Point		F-Throws		Rebounds											Scoring	
Season	gp-gs	min/avg	fg-fga	pct	fg-fga	pct	ft-fta	pct	off	def	tot	avg	pf	fo	ast	to	blk	stl	pts	avg	
2011-12	31-1	379/12.2	44-115	.383	7-30	.233	35-47	.745	16	27	43	1.4	16	0	32	52	7	16	130	4.2	
2012-13	1-1	29/29.0	5-10	.500	1-5	.200	0-0	.000	1	0	1	1.0	4	0	3	3	0	2	11	11.0	
2013-14	30-17	857/28.6	102-261	.391	27-93	.290	67-92	.728	40	66	106	3.5	61	2	81	83	12	28	298	9.9	
2014-15	30-30	1058/35.3	116-329	.353	25-99	.253	76-97	.784	16	94	110	3.7	58	0	111	95	12	35	333	11.1	
2015-16	15-15	473/31.5	81-163	.497	25-65	.385	17-25	.680	17	27	44	2.9	28	0	39	34	11	16	204	13.6	
TOTAL	107-64	2796/26.1	348-878	.396	85-292	.291	195-261	.747	90	214	304	2.8	167	2	266	267	42	97	976	9.1	

Trinder, Megan

Vandenberg, Jacinta

			Total		3-Point		F-Throws		Rebounds											Scoring	
Season	gp-gs	min/avg	fg-fga	pct	fg-fga	pct	ft-fta	pct	off	def	tot	avg	pf	fo	ast	to	blk	stl	pts	avg	
2015-16	15-15	338/22.5	50-98	.510	0-0	.000	5-15	.333	17	66	83	5.5	41	1	31	26	24	7	105	7.0	
TOTAL	15-15	338/22.5	50-98	.510	0-0	.000	5-15	.333	17	66	83	5.5	41	1	31	26	24	7	105	7.0	

Yearwood, Lauren

			Total		3-Point		F-Throws		Rebounds											Scoring	
Season	gp-gs	min/avg	fg-fga	pct	fg-fga	pct	ft-fta	pct	off	def	tot	avg	pf	fo	ast	to	blk	stl	pts	avg	
2015-16	11-0	76/6.9	10-19	.526	0-0	.000	2-7	.286	10	16	26	2.4	5	0	5	8	3	3	22	2.0	
TOTAL	11-0	76/6.9	10-19	.526	0-0	.000	2-7	.286	10	16	26	2.4	5	0	5	8	3	3	22	2.0	

2015-16 BOX SCORES

Official Basketball Box Score -- Game Totals -- Final Statistics Oregon vs North Carolina 11/15/15 12:30 PM at Carmichael Arena, Chapel Hill

Oregon 79 • 1-0

#	Player	Total		3-Ptr		Rebounds			PF	TP	A TO Blk Sd				Min
		FG-FGA	FT-FTA	FG-FGA	FT-FTA	Off	Def	Tot			A	TO	Blk	Sd	
14	Alleyne, Jillian	f	4-8	0-0	4-8	6	7	13	4	12	5	3	2	1	30
15	Vandenberg, Jacinta	f	3-8	0-0	0-0	0	5	5	4	6	2	2	1	0	20
04	Cazorla, Maite	g	4-9	1-6	0-0	0	2	2	2	9	9	2	0	4	39
10	Bando, Lexi	g	6-10	4-8	2-2	0	3	3	2	18	0	3	0	0	40
33	Petersen, Lexi	g	5-8	4-7	0-0	1	2	3	4	14	2	3	1	0	26
05	Loera, Jordan	g	1-2	0-1	0-0	0	2	2	0	2	1	2	0	0	6
11	Brenner, Liz	g	1-1	0-0	0-0	0	0	0	1	2	0	0	0	0	9
22	Yearwood, Lauren	g	0-0	0-0	0-0	0	1	1	0	0	0	1	0	0	2
32	Gildon, Oti	g	1-2	1-1	0-0	1	0	1	1	3	0	0	0	0	7
44	Cooper, Kat	g	5-11	3-6	0-0	1	2	3	2	13	2	0	0	0	21
Team						1	1	2							
Totals			30-59	13-29	6-10	10	25	35	20	79	21	16	4	5	200
FG % 1st Half:		16-31	51.6%	2nd half:	14-28	50.0%	Game:	30-59	50.8%	Deadball Rebounds					
3FG % 1st Half:		6-14	42.9%	2nd half:	7-15	46.7%	Game:	13-29	44.8%	5.2					
FT % 1st Half:		0-0	0.0%	2nd half:	6-10	60.0%	Game:	6-10	60.0%						

North Carolina 77 • 0-2

#	Player	Total		3-Ptr		Rebounds			PF	TP	A TO Blk Sd				Min
		FG-FGA	FT-FTA	FG-FGA	FT-FTA	Off	Def	Tot			A	TO	Blk	Sd	
30	Summers, Hillary	f	7-12	0-0	0-0	1	3	4	3	14	1	0	1	1	37
05	Watts, Stephanie	g	5-15	2-10	2-4	2	0	2	2	14	1	2	0	1	37
10	Cherry, Jamie	g	6-14	4-8	7-8	2	2	4	2	23	4	1	0	0	40
22	Bryant, N'Dea	g	3-6	0-0	2-4	2	6	8	3	8	1	3	1	5	33
24	Walker, Destinee	g	5-15	0-5	4-4	0	2	2	4	14	1	2	0	2	39
31	Johnson, Erika	g	2-6	0-0	0-1	4	1	5	2	4	0	1	0	0	14
Team						6	3	9							
Totals			28-68	6-23	15-21	17	17	34	16	77	8	9	2	9	200
FG % 1st Half:		15-33	45.5%	2nd half:	13-35	37.1%	Game:	28-68	41.2%	Deadball Rebounds					
3FG % 1st Half:		4-10	40.0%	2nd half:	2-13	15.4%	Game:	6-23	26.1%	2.1					
FT % 1st Half:		8-10	80.0%	2nd half:	7-11	63.6%	Game:	15-21	71.4%						

Officials: Denise Brooks, Maj Forsberg, Erika Herriman-Camarota
Technical fouls: Oregon-None. North Carolina-None.
Attendance: 2036
Time of Game: 1:57

Score by periods	1st	2nd	3rd	4th	Total
Oregon	18	20	27	14	79
North Carolina	24	18	17	18	77

Last FG - ORE 4th-03:00, NC 4th-00:26.
Largest lead - ORE by 10 4th-06:45, NC by 8 1st-03:38.
ORE led for 16:28. NC led for 20:39. Game was tied for 02:33.

Points	In Paint	Off T/O	2nd Chance	Fast Break	Bench
ORE	24	9	14	4	20
NC	28	22	22	6	4

Score tied - 3 times.
Lead changed - 10 times.

Official Basketball Box Score -- Game Totals -- Final Statistics Hampton vs Oregon 11/19/15 6:00 PM at Eugene, Ore. (Matthew Knight Arena)

Hampton 51 • 0-3

#	Player	Total		3-Ptr		Rebounds			PF	TP	A TO Blk Sd				Min
		FG-FGA	FT-FTA	FG-FGA	FT-FTA	Off	Def	Tot			A	TO	Blk	Sd	
31	LUPOE,Kaylah	f	3-11	0-0	0-0	0	6	6	3	6	0	1	2	0	24
00	TATE-DeFREITAS,Malia	g	6-21	2-6	2-2	3	3	6	2	16	0	1	0	2	36
03	GILBEAUX,Georgianna	g	1-3	0-1	1-2	2	4	2	3	0	0	3	0	1	40
24	DAVIS,Areana	g	0-1	0-1	0-0	0	1	1	1	0	0	1	0	0	4
33	GREEN,Chanel	g	1-3	0-1	2-4	0	0	0	2	4	4	0	0	0	25
01	JAMES,Dejane'	g	2-6	1-2	0-0	0	0	0	1	5	3	3	0	0	11
05	WILLIAMS,Natalie	g	1-2	0-1	0-0	1	0	1	0	2	0	0	0	0	8
10	WILLIS,K'lynn	g	2-4	2-3	0-0	0	0	0	0	6	1	2	0	1	7
13	BOYD,Shaleise	g	2-3	0-0	0-0	1	0	1	1	4	0	1	0	0	7
15	JORDAN,Ryan	g	1-5	0-1	0-0	1	1	2	2	2	0	3	0	0	24
21	SAYLE,Mikayla	g	1-1	0-0	1-2	0	0	0	1	3	0	0	1	0	9
30	ROSE,Kristine	g	0-1	0-1	0-0	0	0	0	1	0	0	0	1	0	5
Team						2	2	4							
Totals			20-61	5-17	6-10	10	16	26	18	51	8	15	4	4	200
FG % 1st Half:		8-31	25.8%	2nd half:	12-30	40.0%	Game:	20-61	32.8%	Deadball Rebounds					
3FG % 1st Half:		2-9	22.2%	2nd half:	3-8	37.5%	Game:	5-17	29.4%	4.1					
FT % 1st Half:		0-0	0.0%	2nd half:	6-10	60.0%	Game:	6-10	60.0%						

Oregon 86 • 2-0

#	Player	Total		3-Ptr		Rebounds			PF	TP	A TO Blk Sd				Min
		FG-FGA	FT-FTA	FG-FGA	FT-FTA	Off	Def	Tot			A	TO	Blk	Sd	
14	Alleyne, Jillian	f	6-8	0-0	0-0	3	7	10	0	14	5	2	1	1	20
15	Vandenberg, Jacinta	f	6-12	0-0	0-0	2	5	7	1	12	5	2	3	0	21
04	Cazorla, Maite	g	4-9	2-5	0-0	1	2	3	0	10	5	1	1	2	29
10	Bando, Lexi	g	2-6	2-5	2-2	0	5	5	3	8	3	3	0	1	27
33	Petersen, Lexi	g	1-5	0-4	1-2	2	0	2	2	3	0	3	1	0	25
05	Loera, Jordan	g	0-2	0-2	0-0	1	1	2	0	0	1	0	0	1	10
11	Brenner, Liz	g	3-4	0-0	1-2	1	2	3	1	7	1	0	0	1	11
13	Moore, Mar'Shay	g	1-4	1-2	2-2	1	0	1	1	5	0	3	0	0	12
22	Yearwood, Lauren	g	1-1	0-0	0-0	3	3	6	1	2	1	2	1	0	9
32	Gildon, Oti	g	3-5	0-2	3-3	1	4	5	1	9	1	0	0	1	17
44	Cooper, Kat	g	5-7	4-5	2-2	1	1	2	0	16	2	0	0	0	16
51	Gruys, Katie	g	0-1	0-0	0-0	1	0	1	1	0	0	0	0	0	3
Team						0	2	2							
Totals			32-64	9-25	13-17	17	30	47	11	86	24	16	7	7	200
FG % 1st Half:		15-31	48.4%	2nd half:	17-33	51.5%	Game:	32-64	50.0%	Deadball Rebounds					
3FG % 1st Half:		5-16	31.3%	2nd half:	4-9	44.4%	Game:	9-25	36.0%	2.1					
FT % 1st Half:		3-6	50.0%	2nd half:	10-11	90.9%	Game:	13-17	76.5%						

Officials: Michol Murray, Kent Johnson, Kenneth Nash
Technical fouls: Hampton-None. Oregon-None.
Attendance: 956

Score by periods	1st	2nd	3rd	4th	Total
Hampton	14	4	15	18	51
Oregon	18	20	24	24	86

Last FG - HAM 4th-00:18, ORE 4th-00:50.
Largest lead - HAM by 1 1st-03:21, ORE by 39 4th-02:10.
HAM led for 00:48. ORE led for 38:18. Game was tied for 00:54.

Score tied - 0 times.
Lead changed - 2 times.

Official Basketball Box Score -- Game Totals -- Final Statistics UC Santa Barbara vs Oregon 11/22/15 12:00 PM at Eugene, Ore. (Matthew Knight Arena)

UC Santa Barbara 51 • 1-3

#	Player	Total		3-Ptr		Rebounds			PF	TP	A TO Blk Sd				Min	
		FG-FGA	FT-FTA	FG-FGA	FT-FTA	Off	Def	Tot			A	TO	Blk	Sd		
15	Jones, Kali	f	0-6	0-0	1-2	2	4	6	1	1	1	1	0	1	26	
32	Wright, Mc'Chael	f	0-2	0-1	0-0	1	0	1	0	0	0	0	0	0	10	
02	Ware, Jasmine	g	6-11	0-0	0-0	0	0	0	3	12	2	1	0	5	21	
22	Lopez, Diroseline	g	1-5	1-2	2-2	0	1	1	2	5	2	4	0	0	25	
23	Miller, Coco	g	3-10	2-7	2-2	0	1	1	4	10	2	1	0	3	23	
10	Roper, Makala	g	1-5	0-2	2-3	0	1	1	1	4	0	4	0	3	19	
10	Jemernigbe, Onome	g	1-5	1-1	2-4	0	2	2	1	5	1	3	0	1	25	
12	Maragnes, Melissa	g	0-0	0-0	0-0	0	0	0	1	0	0	0	0	0	3	
13	Morrison, Kendra	g	0-3	0-2	0-0	1	1	2	2	0	1	1	1	0	11	
14	Ramey, Julianna	g	0-0	0-0	0-0	0	0	0	0	0	0	0	0	0	0+	
21	Durr, Chaya	g	5-7	0-0	1-4	2	0	2	3	11	1	2	0	3	17	
24	Farris, Taylor	g	1-4	1-1	0-0	0	3	3	2	3	1	4	0	2	20	
Team						5	0	5								
Totals			18-58	5-16	10-17	11	13	24	20	51	11	21	1	18	200	
FG % 1st Half		8.27	29.6%	2nd half:	10-31	32.3%	Game:	18-58	31.0%							Dashball
3FG % 1st Half		5-8	37.5%	2nd half:	2-8	25.0%	Game:	5-16	31.3%							Rebounds
FT % 1st Half		5-8	62.5%	2nd half:	5-9	55.6%	Game:	10-17	58.8%							4

2015-16 BOX SCORES

Official Basketball Box Score -- Game Totals -- Final Statistics North Dakota vs Oregon 11/28/15 2:00 PM at Eugene, Ore. (Matthew Knight Arena)

North Dakota 51 • 1-5

#	Player	Total		3-Ptr		Rebounds			PF	TP	A	TO	Blk	Stl	Min
		FG-FGA	FG-FGA	FT-FTA	FT-FTA	Off	Def	Tot							
11	LOYD, Mia	f	4-7	0-1	6-9	1	7	8	2	14	3	1	0	1	28
52	SMITH, Stephanie	c	2-2	0-0	0-1	0	0	0	5	4	0	2	2	0	14
01	SZABLA, Leah	g	2-4	1-1	2-2	0	0	0	2	7	1	2	0	1	24
10	DYER, Makailah	g	1-7	1-2	5-6	2	0	2	1	8	1	3	0	0	28
15	KNOX, Kelsey	g	0-4	0-1	1-2	0	1	1	1	1	2	2	0	2	26
03	KLAPPRODT, Katie		1-1	0-0	1-1	0	0	0	0	3	0	0	0	1	4
04	MORTON, Jill		1-5	0-1	0-0	0	1	1	2	2	0	0	0	2	12
05	ROSCOE, Samantha		4-8	0-0	0-0	1	3	4	2	8	0	2	3	2	19
12	ASUNCION, Kanani		1-2	0-1	0-0	0	0	0	0	2	0	0	0	0	5
21	RIPLINGER, Ellie		0-1	0-0	0-0	1	0	1	0	0	0	0	0	0	5
22	BOIKE, Sydney		0-1	0-0	0-0	0	0	0	1	0	0	1	0	0	5
34	KLABO, Lexi		0-2	0-1	0-0	0	1	1	4	0	0	3	1	1	15
35	FREIJE, Fallyn		1-6	0-1	0-0	0	0	0	3	2	1	1	0	0	15
Team						5	0	5							
Totals			17-50	2-9	15-21	10	13	23	23	51	8	17	6	10	200
FG % 1st Half:		9-22	40.9%	2nd half:	8-28	28.6%	Game:		17-50	34.0%	Deadball				
3FG % 1st Half:		2-6	33.3%	2nd half:	0-3	0.0%	Game:		2-9	22.2%	Rebounds				
FT % 1st Half:		6-10	60.0%	2nd half:	9-11	81.8%	Game:		15-21	71.4%	4,1				

Oregon 77 • 5-0

#	Player	Total		3-Ptr		Rebounds			PF	TP	A	TO	Blk	Stl	Min
		FG-FGA	FG-FGA	FT-FTA	FT-FTA	Off	Def	Tot							
14	Alleyne, Jillian	f	6-10	0-0	5-8	3	8	11	2	17	2	2	2	2	32
15	Vandenberg, Jacinta	f	2-4	0-0	0-0	0	1	1	2	4	0	2	2	0	17
04	Cazorla, Maite	g	2-3	0-1	0-0	1	0	1	2	4	4	0	0	2	20
10	Bando, Lexi	g	5-11	2-3	2-2	1	2	3	1	14	1	0	1	0	29
33	Petersen, Lexi	g	5-9	2-4	1-2	1	1	2	1	13	3	0	1	3	31
05	Loera, Jordan		0-3	0-2	4-4	0	3	3	2	4	1	1	0	0	11
11	Brenner, Liz		1-3	0-0	2-2	1	0	1	3	4	2	1	2	0	12
13	Moore, Mar'Shay		1-3	0-1	1-1	0	1	1	0	3	0	2	0	0	11
22	Yearwood, Lauren		0-0	0-0	0-0	0	4	4	2	0	0	1	0	0	8
32	Gildon, Oti		1-3	0-0	0-0	1	0	1	1	2	0	1	0	0	14
44	Cooper, Kat		4-4	2-2	2-3	1	1	2	3	12	1	4	0	0	12
51	Gruys, Katie		0-0	0-0	0-0	0	0	0	0	0	1	0	0	0	2
Team						3	1	4							
Totals			27-53	6-13	17-22	12	22	34	19	77	14	15	8	7	200
FG % 1st Half:		15-25	60.0%	2nd half:	12-28	42.9%	Game:		27-53	50.9%	Deadball				
3FG % 1st Half:		5-9	55.6%	2nd half:	1-4	25.0%	Game:		6-13	46.2%	Rebounds				
FT % 1st Half:		5-6	83.3%	2nd half:	12-16	75.0%	Game:		17-22	77.3%	5,3				

Officials: Michael Price, Cheryl Flores, Tiffany Bird
Technical fouls: North Dakota-None. Oregon-None.
Attendance: 1141

Score by periods	1st	2nd	3rd	4th	Total
North Dakota	8	18	12	13	51
Oregon	20	20	20	17	77

Last FG - UND 4th 01:11, ORE 4th 04:50.
Largest lead - UND None, ORE by 28 4th 08:13.
UND led for 00:00. ORE led for 38:28. Game was tied for 01:32.

Score tied - 0 times.
Lead changed - 0 times.

Official Basketball Box Score -- Game Totals -- Final Statistics Utah Valley vs Oregon 12/5/15 2:00 PM at Eugene, Ore. (Matthew Knight Arena)

Utah Valley 68 • 6-4

#	Player	Total		3-Ptr		Rebounds			PF	TP	A	TO	Blk	Stl	Min
		FG-FGA	FG-FGA	FT-FTA	FT-FTA	Off	Def	Tot							
12	MaWhinney, Rebecca	f	1-5	1-5	0-0	1	3	4	1	3	1	2	0	1	30
40	Loggins, Sam	c	6-11	0-0	2-3	1	2	3	2	14	0	0	0	0	19
03	Seals, Mariah	g	3-11	2-7	0-2	0	4	4	2	8	1	2	2	1	35
05	Agnew, Georgia	g	1-6	0-0	0-0	2	4	6	2	2	3	5	0	0	21
22	Gordon, Taylor	g	1-4	0-0	2-2	0	2	2	1	4	2	0	0	0	32
13	Norris, Karlee		0-0	0-0	0-0	0	2	2	0	0	2	0	0	0	7
20	Toston, Patrice		2-2	0-0	1-1	1	0	1	2	5	0	0	0	1	8
21	Spooner-Knight, R.		9-16	0-0	5-7	2	1	3	1	23	0	3	1	1	25
25	Preciado, Veronica		0-0	0-0	0-0	0	0	0	1	0	0	0	0	0	2
35	Blanks, Deijah		4-6	0-0	1-3	2	2	4	3	9	0	0	0	0	21
Team						1	0	1							
Totals			27-61	3-12	11-18	10	20	30	15	68	9	12	3	6	200
FG % 1st Half:		15-27	55.6%	2nd half:	12-34	35.3%	Game:		27-61	44.3%	Deadball				
3FG % 1st Half:		2-5	40.0%	2nd half:	1-7	14.3%	Game:		3-12	25.0%	Rebounds				
FT % 1st Half:		5-6	83.3%	2nd half:	6-12	50.0%	Game:		11-18	61.1%	4,2				

Oregon 79 • 7-0

#	Player	Total		3-Ptr		Rebounds			PF	TP	A	TO	Blk	Stl	Min
		FG-FGA	FG-FGA	FT-FTA	FT-FTA	Off	Def	Tot							
14	Alleyne, Jillian	f	11-15	0-0	0-1	8	11	19	0	22	3	3	3	0	35
15	Vandenberg, Jacinta	f	1-4	0-0	0-0	0	4	4	4	2	1	2	2	1	17
04	Cazorla, Maite	g	5-14	2-7	4-6	0	3	3	1	16	8	2	0	4	38
10	Bando, Lexi	g	1-7	0-4	0-0	0	2	2	3	2	2	0	0	0	16
33	Petersen, Lexi	g	6-11	1-4	0-0	3	0	3	2	13	3	3	0	0	37
05	Loera, Jordan		3-4	3-4	0-0	0	0	0	1	9	3	0	0	2	18
11	Brenner, Liz		5-7	0-0	1-1	2	3	5	2	11	1	0	1	0	20
13	Moore, Mar'Shay		1-1	1-1	0-0	0	1	1	2	3	0	1	0	0	6
22	Yearwood, Lauren		0-0	0-0	0-0	0	0	0	0	0	0	0	0	0	2
32	Gildon, Oti		0-0	0-0	1-2	0	0	0	2	1	0	0	0	0	5
44	Cooper, Kat		0-3	0-3	0-0	0	0	0	0	0	0	0	0	0	6
Team						0	2	2							
Totals			33-66	7-23	6-10	13	26	39	17	79	21	11	6	7	200
FG % 1st Half:		17-36	47.2%	2nd half:	16-30	53.3%	Game:		33-66	50.0%	Deadball				
3FG % 1st Half:		6-17	35.3%	2nd half:	1-6	16.7%	Game:		7-23	30.4%	Rebounds				
FT % 1st Half:		2-3	66.7%	2nd half:	4-7	57.1%	Game:		6-10	60.0%	2,1				

Officials: Melissa Barlow, Rick Showers, Teresa Turner
Technical fouls: Utah Valley-None. Oregon-None.
Attendance: 1033

Score by periods	1st	2nd	3rd	4th	Total
Utah Valley	22	15	12	19	68
Oregon	22	20	15	22	79

Last FG - UVU 4th 01:08, ORE 4th 00:23.
Largest lead - UVU by 5 1st 03:37, ORE by 19 4th 05:18.
UVU led for 10:17. ORE led for 28:05. Game was tied for 01:38.

Score tied - 2 times.
Lead changed - 8 times.

Official Basketball Box Score -- Game Totals -- Final Statistics San Jose State vs Oregon 11/30/15 8:06 PM at Eugene, Ore. (Matthew Knight Arena)

San Jose State 74 • 1-4

#	Player	Total		3-Ptr		Rebounds			PF	TP	A	TO	Blk	Stl	Min
		FG-FGA	FG-FGA	FT-FTA	FT-FTA	Off	Def	Tot							
11	SMITH, Jasmine	f	3-8	0-0	0-0	0	1	1	2	6	0	1	1	1	17
24	STEVENS, Ellie	f	3-7	1-5	2-2	1	1	2	2	9	2	2	0	0	26
05	HARRIS, Nyre	g	4-9	0-2	1-2	1	1	2	2	9	0	2	2	0	20
10	BAKER, Aniya	g	1-6	0-1	2-2	0	0	0	1	4	3	3	0	5	14
20	WEST, Rachol	g	0-7	0-6	0-0	1	1	2	3	0	2	0	0	1	24
01	LADD, Myzhanique		3-6	1-2	4-6	0	3	3	2	11	3	0	0	2	23
02	KOHLHAAS, Andrea		0-0	0-0	0-0	0	0	0	1	0	0	0	0	0	11

2015-16 BOX SCORES

Official Basketball Box Score -- Game Totals -- Final Statistics UC Riverside vs Oregon 12/15/15 5:00 PM at Eugene, Ore. (Matthew Knight Arena)

UC Riverside 81 • 5-5

#	Player		Total		3-Ptr		Rebounds			PF	TP	A TO Blk Stl				Min
			FG-FGA	FG-FGA	FT-FTA	Off	Def	Tot	A			TO	Blk	Stl		
10	Verin, Rejane	f	9-17	0-1	3-3	0	6	6	4	21	8	3	1	1	35	
34	Lefebvre, Clemence	f	6-10	5-8	0-1	0	4	4	1	17	3	2	0	1	37	
44	Nyingifa, Inara	f	2-3	0-0	0-0	4	0	4	3	4	2	0	1	1	25	
15	Curry, Michelle	g	0-3	0-0	0-0	1	1	2	0	0	0	1	0	1	12	
23	Crain, Brittany	g	8-16	2-7	3-3	3	5	8	2	21	1	3	1	0	40	
02	Martin, Akiilah		1-1	1-1	2-2	0	0	0	0	5	2	1	1	0	8	
05	DeCoud, Simone		2-7	1-3	0-2	0	1	1	4	5	2	2	0	0	24	
11	Williams, Jazzmeen		4-8	0-0	0-0	2	4	6	1	8	2	2	2	0	19	
Team						0	0	0								
Totals			32-65	9-20	8-11	10	21	31	15	81	20	14	6	4	200	
FG % 1st Half: 15-31			48.4%	2nd half: 17-34	50.0%	Game: 32-65		49.2%		Deadball						
3FG % 1st Half: 2-6			33.3%	2nd half: 7-14	50.0%	Game: 9-20		45.0%		Rebounds						
FT % 1st Half: 4-4			100.0%	2nd half: 4-7	57.1%	Game: 8-11		72.7%		1.2						

Oregon 95 • 9-0

#	Player		Total		3-Ptr		Rebounds			PF	TP	A TO Blk Stl				Min
			FG-FTA	FG-FGA	FT-FTA		Off	Def	Tot			A	TO	Blk	Stl	
14	Alleyne, Jillian	f	10-15	0-0	5-8	8	9	17	3	25	0	2	0	0	31	
15	Vandenberg, Jacinta	f	4-9	0-0	3-7	4	4	8	0	11	4	0	2	0	25	
04	Cazorla, Maite	g	6-14	2-6	1-2	3	3	6	2	15	7	0	0	0	34	
10	Bando, Lexi	g	6-14	5-9	0-0	0	3	3	2	17	2	2	0	1	32	
33	Petersen, Lexi	g	5-13	0-2	0-0	2	2	4	0	10	5	1	2	1	32	
05	Loera, Jordan		0-1	0-1	0-0	0	0	0	2	0	0	2	0	0	6	
11	Brenner, Liz		3-6	0-0	1-2	4	1	5	3	7	2	1	0	0	15	
13	Moore, MarShay		0-3	0-1	0-0	0	1	1	1	0	1	0	0	1	7	
32	Gildon, Oti		2-5	0-2	0-0	2	0	2	0	4	0	0	0	0	8	
44	Cooper, Kat		2-5	2-5	0-0	0	2	2	0	6	0	1	0	0	10	
Team						7	0	7								
Totals			38-85	9-26	10-19	30	25	55	13	95	21	9	4	3	200	
FG % 1st Half: 21-39 53.8%			2nd half: 17-46 37.0%	Game: 38-85 44.7%		Deadball										
3FG % 1st Half: 7-13 53.8%			2nd half: 2-13 15.4%	Game: 9-26 34.6%		Rebounds										
FT % 1st Half: 2-3 66.7%			2nd half: 8-16 50.0%	Game: 10-19 52.6%		3										

Officials: Penny Davis, Shelley Nakasone, Janetta Graham
Technical fouls: UC Riverside-None. Oregon-None.
Attendance: 1481

Score by periods	1st	2nd	3rd	4th	Total
UC Riverside	16	20	20	25	81
Oregon	25	26	21	23	95

Last FG - UCR 4th-01:59, ORE 4th-00:44.
Largest lead - UCR by 3 1st-08:28, ORE by 26 3rd-04:23.
UCR led for 02:37, ORE led for 35:53, Game was tied for 00:47.

	In	Off	2nd	Fast	Bench
Points	Paint	T/O	Chance	Break	
UCR	32	8	9	0	18
ORE	50	23	28	2	17

Score tied - 1 time.
Lead changed - 2 times.

Official Basketball Box Score -- Game Totals -- Final Statistics Portland State vs Oregon 12/17/15 6:00 PM at Eugene, Ore. (Matthew Knight Arena)

Portland State 59 • 1-9

#	Player	Total		3-Ptr		Rebounds			PF	TP	A TO Blk Stl				Min
		FG-FTA	FG-FGA	FT-FTA	Off	Def	Tot	A			TO	Blk	Stl		
04	JURHAR, Pia	f	0-5	0-0	2-4	4	9	13	4	2	0	1	1	0	26
05	McNAIR, Kian	g	2-10	1-2	0-0	1	1	2	2	5	2	4	0	3	23
11	WEST, Cici	g	2-10	0-0	1-2	1	7	8	3	5	0	0	0	0	28
15	JAMES, Corey	g	5-14	3-5	0-0	1	3	4	2	13	1	4	2	0	34
45	KAY, Michaela	g	3-9	1-4	0-0	1	2	3	2	7	1	9	0	2	24
01	HALEY, Danah		1-5	0-0	0-0	1	5	6	0	2	1	1	0	1	23
20	TORRES, Ashley		7-17	2-6	2-6	3	0	3	1	18	1	4	0	1	19
22	WALTERS, Montana		0-0	0-0	2-2	1	0	1	0	2	1	2	0	0	14
23	MEJIA, Yaremi		2-4	1-2	0-0	0	0	0	3	5	0	3	0	2	9
Team			22-74	8-19	7-14	16	28	44	17	59	7	28	3	9	200
Totals															
FG % 1st Half:		11-38	28.9%	2nd half:	11-36	30.6%	Game:		22-74	29.7%	Deadball				
3FG % 1st Half:		5-9	55.6%	2nd half:	3-10	30.0%	Game:		8-19	42.1%	Rebounds				
FT % 1st Half:		3-6	50.0%	2nd half:	4-8	50.0%	Game:		7-14	50.0%	3,1				

Oregon 122 • 10-0

#	Player		Total		3-Ptr		Rebounds			PF	TP	A TO Blk Stl				Min
			FG-FGA	FG-FGA	FT-FTA	FT-FTA	Off	Def	Tot			A	TO	Blk	Stl	
14	Alleyne, Jillian	f	9-11	0-0	3-4	1	11	12	1	21	1	0	2	1	24	
15	Vandenberg, Jacinta	f	2-4	0-0	0-0	0	4	4	3	4	1	0	1	1	11	
04	Cazorla, Maite	g	7-8	1-1	1-2	0	3	3	2	16	12	0	0	7	25	
10	Bando, Lexi	g	3-9	1-4	1-1	0	1	1	1	8	0	1	0	2	19	
33	Petersen, Lexi	g	9-16	3-9	1-2	1	2	3	2	22	4	2	1	4	23	
05	Loera, Jordan		2-2	2-2	0-0	1	0	1	3	6	4	3	0	2	15	
11	Brenner, Liz		2-4	0-0	0-0	0	1	1	0	4	1	3	0	1	14	
13	Moore, MarShay		4-6	2-2	3-5	0	3	3	3	13	2	2	0	3	13	
22	Yearwood, Lauren		4-7	0-0	2-5	3	5	8	3	10	1	2	2	0	19	
32	Gildon, Oti		1-5	1-1	0-0	1	5	6	3	3	2	1	4	1	20	
44	Cooper, Kat		5-7	5-7	0-0	1	1	2	0	15	0	0	1	0	12	
51	Gruys, Katie		0-2	0-0	0-0	0	1	1	0	0	0	1	0	0	5	
Team						1	3	4								
Totals			48-81	15-26	11-19	9	40	49	19	122	28	15	11	22	200	
FG % 1st Half:		24-42	57.1%	2nd half:	24-39	61.5%	Game:		48-81	59.3%						Deadball Rebounds 3
3FG % 1st Half:		5-12	41.7%	2nd half:	10-14	71.4%	Game:		15-26	57.7%						
FT % 1st Half:		5-7	71.4%	2nd half:	6-12	50.0%	Game:		11-19	57.9%						

Officials: Lisa Jones, Brian Woods, Alejandro Moreno
Technical fouls: Portland State-None. Oregon-None.
Attendance: 1258

Score by periods	1st	2nd	3rd	4th	Total
Portland State	17	13	12	17	59
Oregon	30	28	38	26	122

Last FG - PSU 4th-01:40, ORE 4th-01:52.
Largest lead - PSU None, ORE by 67 4th-01:52.
PSU led for 00:00, ORE led for 39:38, Game was tied for 00:20.

	In	Off	2nd	Fast	Bench
Points	Paint	T/O	Chance	Break	
PSU	18	12	7	0	27
ORE	58	40	13	16	51

Score tied - 0 times.
Lead changed - 0 times.

Official Basketball Box Score -- Game Totals -- Final Statistics Seattle U vs Oregon 12/28/15 6:00 PM at Eugene, Ore. (Matthew Knight Arena)

Seattle U 62 • 5-8

#	Player		Total		3-Ptr		Rebounds			PF	TP	A TO Blk Stl				Min
			FG-FGA	FG-FGA	FT-FTA	Off	Def	Tot	A			TO	Blk	Stl		
15	Sahar, Tal	f	6-9	4-5	0-0	0	5	5	2	16	0	3	0	0	29	
22	Lewey, Ashlyn	f	4-11	2-5	4-4	2	1	3	2	14	1	3	0	1	38	
31	Ross, Taelor	c	7-12	0-0	0-3	1	2	3	3	14	0	0	0	0	19	
02	Best, Kaylee	g	2-10	1-5	1-2	5	3	8	3	6	11	2	0	2	39	
21	Parry, Delanie	g	2-5	1-2	0-0	0	1	1	1	5	5	2	1	0	25	
00	Heredia, Shaylin		0-2	0-0	0-0	0	0	0	1	0	0	0	0	1	9	
04	Shikel, Masha		0-3	0-3	2-4	1	1	2	1	2	0	0	0	0	13	
25	Ceballos, Cydnee		1-2	0-0	1-2	0	1	1	1	3	0	0	0	0	7	
35	Dearth, Kristin		1-2	0-0	0-0	0	2	2	0	2	0	0	0	0	10	
45	Afunugo, Wilma		0-2	0-0	0-0	2	1	3	1	0	0	2	0	0	11	
	Team					1	3	4								
Totals			23-58	8-20	8-15	12	20	32	15	62	17	12	1	4	200	
FG % 1st Half: 14-30			46.7%	2nd half: 9-28	32.1%	Game: 23-58		39.7%							Deadball Rebounds 3	
3FG % 1st Half: 5-11			45.5%	2nd half: 3-9	33.3%	Game: 8-20		40.0%								
FT % 1st Half: 5-6			83.3%	2nd half: 3-9	33.3%	Game: 8-15		53.3%								

2015-16 BOX SCORES

Official Basketball Box Score -- Game Totals -- Final Statistics

Oregon vs USC

1/4/16 5 p.m. at Galen Center (Los Angeles, Calif.)

Oregon 67 • 11-2, 0-2

#	Player	Total		3-Ptr		Rebounds			PF	TP	A	TO	Blk	Stl	Min
		FG-FGA	FT-FTA	FG-FGA	FT-FTA	Off	Def	Tot							
14	Alleyne, Jillian	f	10-21	0-0	3-4	6	11	17	4	23	0	4	0	1	37
15	Vandenberg, Jacinta	f	1-2	0-0	0-0	0	4	4	1	2	1	1	1	1	28
04	Cazorla, Maite	g	2-9	2-4	1-2	0	2	2	3	7	3	5	0	1	35
10	Bando, Lexi	g	0-3	0-0	2-2	0	1	1	3	2	1	1	0	0	29
33	Petersen, Lexi	g	7-11	2-3	6-6	0	3	3	2	22	1	6	0	0	36
05	Loera, Jordan		0-0	0-0	0	0	0	0	1	0	1	0	0	0	11
11	Brenner, Liz		1-4	0-0	2-3	1	1	2	1	4	0	1	0	0	7
32	Gildon, Oti		2-2	1-1	2-2	0	0	0	0	7	0	1	0	0	5
44	Cooper, Kat		0-3	0-3	0-0	0	0	0	2	0	2	0	0	0	12
Team						4	3	7			2				
Totals			23-55	5-11	16-19	11	25	36	17	67	9	21	1	3	200
FG % 1st Half:		11-25	44.0%	2nd half:	12-30	40.0%	Game:	23-55	41.8%					Deadball	
3FG % 1st Half:		2-4	50.0%	2nd half:	3-7	42.9%	Game:	5-11	45.5%					Rebounds	
FT % 1st Half:		4-5	80.0%	2nd half:	12-14	85.7%	Game:	16-19	84.2%					0,1	

USC 74 • 13-2, 1-2

#	Player	Total		3-Ptr		Rebounds			PF	TP	A	TO	Blk	Stl	Min
		FG-FGA	FT-FTA	FG-FGA	FT-FTA	Off	Def	Tot							
35	Simon, Kristen	f	1-10	0-0	5-6	2	5	7	4	7	2	2	1	0	30
41	Fagbenle, Temi	f	9-13	0-0	1-2	1	10	11	2	19	1	3	1	1	34
02	Taito, Khaedin	g	2-2	1-1	0-0	0	0	0	3	5	0	0	1	0	21
14	Edwards, Sadie	g	2-5	0-3	0-2	0	1	1	1	4	0	0	0	1	13
23	Barrett, Brianna	g	1-5	0-0	6-6	0	2	2	4	8	4	2	1	1	31
10	Jaco, Courtney		2-6	0-4	0-0	0	0	0	0	4	0	1	0	3	21
13	Effa, Marguerite		4-4	0-0	1-2	1	2	3	2	9	1	0	0	0	15
21	Mazyck, Aliyah		6-10	1-2	5-6	0	1	1	4	18	2	2	0	3	27
25	Lloyd, Alexis		0-0	0-0	0-0	0	0	0	0	0	1	0	1	0	8
Team						1	2	3			1				
Totals			27-55	2-10	18-24	5	25	28	20	74	10	12	4	10	200
FG % 1st Half:		11-28	39.3%	2nd half:	16-27	59.3%	Game:	27-55	49.1%					Deadball	
3FG % 1st Half:		0-3	0.0%	2nd half:	2-7	28.6%	Game:	2-10	20.0%					Rebounds	
FT % 1st Half:		2-7	28.6%	2nd half:	16-17	94.1%	Game:	18-24	75.0%					3,1	

Officials: Roy Gulbeyan, Clarke Stevens, Benny Luna

Technical fouls: Oregon-None. USC-None.

Attendance: 565

Score by periods	1st	2nd	3rd	4th	Total
Oregon	16	12	12	27	67
USC	16	8	22	28	74

Last FG - ORE: 4th-00:21, USC: 4th-03:19.

Largest lead - ORE by 7 1st-05:35, USC by 14 4th-01:48.

ORE led for 21:51. USC led for 18:47. Game was tied for 02:10.

Points	In	Off	2nd	Fast	Bench
ORE	30	10	9	0	11
USC	38	25	2	14	31

Score tied - 4 times.
Lead changed - 5 times.

Official Basketball Box Score -- Game Totals -- Final Statistics

Oregon vs Oregon State

1/8/16 7 p.m. at Gill Coliseum (Corvallis, Ore.)

Oregon 33 • 11-3, 0-3 Pac-12

#	Player	Total		3-Ptr		Rebounds			PF	TP	A	TO	Blk	Stl	Min
		FG-FGA	FT-FTA	FG-FGA	FT-FTA	Off	Def	Tot							
14	Alleyne, Jillian	f	4-16	0-0	2-4	3	3	6	1	10	0	0	0	0	30
15	Vandenberg, Jacinta	c	4-7	0-0	1-2	1	6	7	4	9	0	2	1	0	24
04	Cazorla, Maite	g	1-6	1-3	0-0	0	1	1	3	3	3	5	0	2	31
10	Bando, Lexi	g	0-5	0-4	0-0	0	3	3	3	0	0	2	0	2	25
33	Petersen, Lexi	g	1-10	0-2	0-0	0	1	1	3	2	0	1	0	0	25
05	Loera, Jordan	g	0-3	0-1	0-0	0	0	0	0	0	0	0	0	0	7
11	Brenner, Liz		2-3	0-0	0-1	3	3	6	0	4	0	0	0	1	9
13	Moore, Mar'Shay		0-5	0-2	1-2	1	1	2	0	1	1	0	0	1	18
22	Yearwood, Lauren		1-2	0-0	0-0	1	0	1	1	2	0	0	0	2	10
32	Gildon, Oti		1-5	0-3	0-1	1	1	2	3	2	0	0	0	0	16
44	Cooper, Kat		0-3	0-3	0-0	0	0	0	0	0	0	0	0	0	5
Team						3	6	9							
Totals			14-65	1-18	4-10	13	25	38	18	33	4	10	1	8	200
FG % 1st Half:		8-34	23.5%	2nd half:	6-31	19.4%	Game:	14-65	21.5%					Deadball	
3FG % 1st Half:		1-12	8.3%	2nd half:	0-6	0.0%	Game:	1-18	5.6%					Rebounds	
FT % 1st Half:		1-5	20.0%	2nd half:	3-5	60.0%	Game:	4-10	40.0%					2	

Oregon State 60 • 11-3, 2-1 Pac-12

#	Player	Total		3-Ptr		Rebounds			PF	TP	A	TO	Blk	Stl	Min
		FG-FGA	FT-FTA	FG-FGA	FT-FTA	Off	Def	Tot							
32	Hunter, Deven	f	3-6	1-1	0-0	0	11	11	3	7	3	2	0	1	25
44	Hamblin, Ruth	c	7-12	0-0	1-2	3	6	9	3	15	0	1	7	0	34
10	McWilliams, Katie	g	3-4	1-2	0-0	0	3	3	0	7	4	3	0	1	30
11	Hanson, Gabriella	g	4-9	0-3	3-4	0	2	2	3	11	3	2	0	4	31
15	Weisner, Jamie	g	1-10	1-4	7-8	3	6	9	4	10	2	2	0	0	25
04	Brown, Breanna		0-1	0-0	0-0	1	0	1	1	0	0	0	0	0	5
05	Siegner, Samantha		1-1	0-0	0-0	0	4	4	2	2	1	2	0	0	14
12	Orum, Kolbie		0-0	0-0	0-0	0	0	0	0	0	0	0	0	0	2
21	Gulich, Marie		1-3	0-0	0-0	0	3	3	0	2	1	1	0	0	16
22	Hill, Jen'Von'Ta		2-5	0-1	2-2	0	3	3	0	6	1	0	0	0	16
25	Kalmer, Taylor		0-1	0-1	0-0	0	0	0	0	0	1	0	1	0	2
Team						0	4	4							
Totals			22-52	3-12	13-16	7	42	49	16	60	15	14	7	6	200
FG % 1st Half:		10-25	40.0%	2nd half:	12-27	44.4%	Game:	22-52	42.3%					Deadball	
3FG % 1st Half:		3-7	42.9%	2nd half:	0-5	0.0%	Game:	3-12	25.0%					Rebounds	
FT % 1st Half:		9-10	90.0%	2nd half:	4-6	66.7%	Game:	13-16	81.3%					1	

Officials: Darren Krzysnik, Michael Price, Lorena Ahumada

Technical fouls: Oregon-None. Oregon State-None.

Attendance: 4462

Score by periods	1st	2nd	3rd	4th	Total
Oregon	7	11	6	9	33
Oregon State	16	16	14	14	60

Last FG - ORE: 4th-04:38, OSU: 4th-01:15.

Largest lead - ORE by 2 1st-06:20, OSU by 27 4th-01:15.

ORE led for 00:46. OSU led for 35:13. Game was tied for 03:45.

Score tied - 2 times.
Lead changed - 2 times.

Official Basketball Box Score -- Game Totals -- Final Statistics

Oregon State vs Oregon

1/10/16 12:02 PM at Eugene, Ore. (Matthew Knight Arena)

Oregon State 59 • 12-3, 3-1 P12

#	Player		Total		3-Ptr		Rebounds			PF	TP	A	TO	Blk	Stl	Min
			FG-FGA	FT-FTA	FG-FGA	FT-FTA	Off	Def	Tot							
32	Hunter, Deven	f	3-4	1-2	2-2	1	3	4	4	9	0	1	0	1	12	
44	Hamblin, Ruth	c	5-9	0-0	2-2	2	7	9	4	12	2	2	4	0	36	
10	McWilliams, Katie	g	2-5	0-1	4-4	0	4	4	0	8	5	4	0	0	35	
11	Hanson, Gabriella	g	5-11	1-3	1-2	0	0	0	1	12	3	5	0	0	36	
15	Weisner, Jamie	g	4-9	2-3	1-2	1	5	6	1	11	3	2	1	1	39	
04	Brown, Breanna		0-0	0-0	0-0	0	1	1	1	0	0	0	0	0	2	
05	Siegner, Samantha		3-5	0-1	1-2	1	2	3	3	7	2	2	0	1	24	
12	Orum, Kolbie		0-1	0-0	0-2	0	1	1	0	0	0	1	0	0	7	
21	Gulich, Marie		0-2	0-0	0-0	1	2	3	0	0	0	1	0	1	6	
22	Hill, Jen'Von'Ta		0-0	0-0	0-0	0	0	0	1	0	0	0	0	0	3	
Team						2	2	4								
Totals				22-46	4-10	11-16	8	27	35	15	59	15	18	5	4	200
FG % 1st Half: 10-24			41.7%	2nd half: 12-22	54.5%	Game: 22-46	47.8%									Deadball
3FG % 1st Half: 1-5			20.0%	2nd half: 3-5	60.0%	Game: 4-10	40.0%									Rebounds
FT % 1st Half: 3-4			75.0%	2nd half: 8-12	66.7%	Game: 11-16	68.8%									3.1

OREGON AGAINST STANFORD LAST SEASON

Official Basketball Box Score -- Game Totals -- Final Statistics Stanford vs Oregon 03/01/15 1:05 PM at Eugene, Ore. (Matthew Knight Arena)

Stanford 55 • 21-9, 13-5 P12

#	Player		Total	3-Ptr	FT-FTA	Rebounds			PF	TP	A	TO	Blk	Stl	Min
			FG-FGA	FG-FGA		Off	Def	Tot							
24	McCall, Erica	f	0-2	0-0	0-0	1	2	3	1	0	0	0	3	0	11
41	Samuelson, Bonnie	f	2-7	2-7	0-0	0	4	4	0	6	1	0	1	0	31
01	Thompson, Lili	g	6-14	2-5	0-0	0	3	3	2	14	1	2	0	0	32
12	McPhee, Brittany	g	4-13	1-6	0-0	6	2	8	4	9	1	0	1	0	25
33	Orrange, Amber	g	6-15	1-4	0-0	0	3	3	1	13	5	0	0	2	38
00	Green, Alex		0-0	0-0	0-0	0	0	0	0	0	0	1	0	0	1
04	Greenfield, Taylor		2-5	0-1	0-0	1	1	2	0	4	1	0	0	0	10
05	Johnson, Kaylee		2-4	0-0	1-2	5	6	11	2	5	2	2	0	0	28
10	Roberson, Briana		1-6	0-2	0-0	1	1	2	1	2	0	1	0	1	20
23	Camp, Jasmine		1-1	0-0	0-0	0	0	0	0	2	0	0	0	0	1
25	Payne, Erica		0-0	0-0	0-0	0	0	0	0	0	0	0	0	0	1
32	Johnson, Kailee		0-0	0-0	0-0	0	0	0	0	0	0	0	0	0	1
34	Picknell, Tess		0-0	0-0	0-0	0	0	0	0	0	0	0	0	0	1
Team						3	1	4							
Totals			24-67	6-25	1-2	17	23	40	11	55	11	6	5	3	200

FG % 1st Half: 12-34 35.3% 2nd half: 12-33 36.4% Game: 24-67 35.8%
 3FG % 1st Half: 5-12 41.7% 2nd half: 1-13 7.7% Game: 6-25 24.0%
 FT % 1st Half: 1-2 50.0% 2nd half: 0-0 0.0% Game: 1-2 50.0%

Deadball
Rebounds
1,1

Oregon 62 • 13-16, 6-12 P12

#	Player		Total	3-Ptr	FT-FTA	Rebounds			PF	TP	A	TO	Blk	Stl	Min
			FG-FGA	FG-FGA		Off	Def	Tot							
14	Alleyne, Jillian	f	10-15	0-0	2-5	6	6	12	1	22	1	2	1	1	37
40	Carpenter, Megan	c	0-2	0-0	0-0	0	0	0	0	0	0	0	1	0	12
12	Delgado, Amanda	g	3-4	2-3	2-2	0	1	1	0	10	2	0	0	1	33
31	Loper, Katelyn	g	3-9	0-3	3-3	1	6	7	1	9	1	0	0	0	35
33	Petersen, Lexi	g	3-16	1-3	4-4	1	2	3	1	11	4	3	0	2	40-
01	Toler, Drea		1-3	0-0	0-1	2	4	6	2	2	3	1	0	1	15
03	Berthuel, Marie		0-0	0-0	0-0	0	0	0	0	0	0	0	0	0	1
05	Loera, Jordan		3-7	2-4	0-0	1	1	2	0	8	1	1	0	0	27
Team						2	6	8							
Totals			23-56	5-13	11-15	13	26	39	5	62	12	7	2	5	200

FG % 1st Half: 12-30 40.0% 2nd half: 11-26 42.3% Game: 23-56 41.1%
 3FG % 1st Half: 2-6 33.3% 2nd half: 3-7 42.9% Game: 5-13 38.5%
 FT % 1st Half: 3-4 75.0% 2nd half: 8-11 72.7% Game: 11-15 73.3%

Deadball
Rebounds
0

Officials: Charles Gonzalez, Kent Johnson, Cheryl Flores
 Technical fouls: Stanford-None. Oregon-None.
 Attendance: 1949
 Stanford is ranked No. 19 in both polls

Score by periods	1st	2nd	Total
Stanford	30	25	55
Oregon	29	33	62

	In Paint	Off T/O	2nd Chance	Fast Break	Bench
Points STAN	22	13	8	4	13
ORE	20	6	16	2	10

Last FG - STAN 2nd-00:23, ORE 2nd-04:39.
 Largest lead - STAN by 5 1st-11:28, ORE by 11 2nd-07:01.
 STAN led for 10:45. ORE led for 22:41. Game was tied for 06:16.

Score tied - 7 times.
 Lead changed - 10 times.